

# Thailand

Expats Guide by **ScandAsia**



NORDIC  
BUSINESS  
DIRECTORY  
2022

# Scandinavian Village



*Winter living in Thailand for active Scandinavians 50+*

Sun, light and pleasant climate, great service,  
nice people and a lot of activities including golf  
in Bangsaen area just south of Bangkok



[www.scandinavianvillage.net](http://www.scandinavianvillage.net)



**A gift is  
what you  
run towards.  
It's not where  
you start.**



**KING'S COLLEGE  
INTERNATIONAL SCHOOL**  
BANGKOK

**A great heart takes you further.**

***Everybody starts somewhere, but we all have one thing in common. It's the potential we have within us, waiting to be uncovered like a diamond hidden in the rough.***

*Applications for girls and boys aged 2-16 are now welcome.*

[kingsbangkok.ac.th](http://kingsbangkok.ac.th)

*Top boy's or co-ed school in London by The Sunday Times 2017 - 2021*

One-Stop Shop  
for all your editing,  
design, printing and  
digital printing needs

**SCAND**MEDIA



## What we provide...

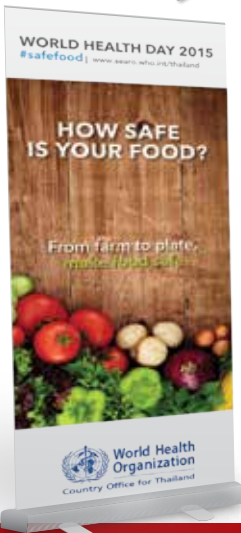
### Publications

Brochures, Leaflets, Annual Reports,  
Calendars & Cards, Planners, etc...



### Marketing Materials

Roll-ups, Banners, CDs, Flags, etc...



**Please contact**

211 Soi Prasert - Manukitch 29, Chorakaebua, Ladprao, Bangkok 10230, Thailand  
Tel: +66 2943 7166-8 Fax: +66 2943 7169 website: [www.scandmedia.com](http://www.scandmedia.com)  
[patcharee.scandmedia@gmail.com](mailto:patcharee.scandmedia@gmail.com)  
[suchaya.scandmedia@gmail.com](mailto:suchaya.scandmedia@gmail.com)

*"Because Scand-Media is Your Partner in Communications"*



## The Places Where I Belong

Luxury Residences In The Heart Of Thong Lo

**akyra** Thonglor Bangkok

88/333 Soi Sukhumvit55 (Thonglor), Sukhumvit Road, North Klongton, Wattana District, Bangkok 10110, Thailand  
T: +66 (02) 090 9000 | E: [akt8-sales@theakyra.com](mailto:akt8-sales@theakyra.com)

This booklet is intended as a help for both newcomers and longer staying expats who have decided to live and work in Thailand. It explains and facilitates practical issues and intends to inspire you to get more out of your stay.

Covid-19 has turned everything upside-down, including being an expatriate in Thailand. But some basic guidance remains relevant.

When you move here, you will need to find new friends. The best way is by joining one or more of the social and professional associations for your own nationality here. Thai Nordic Association - previously called Scandinavian Society Siam - is the ideal place for Nordic people to meet new friends.

The various business communities are also vibrant groups of very different companies from the small entrepreneur to the big corporations with manufacturing units and countrywide net of outlets. At the back of this book you will find a Nordic Business Directory for Thailand, plus a few more that

in each their way are also an important part of the Scandinavian network in Thailand.

This booklet is part of the ScandAsia magazine and online media platform serving all Scandinavian and other expatriates living in Thailand and elsewhere in Asia with news updates by email and online.

The Booklet is sent directly to the home of the subscribers and is placed at points frequently visited by Scandinavian tourists like popular restaurants and hotels and it is sent to all European embassies, consulates and Foreign Chambers of Commerce in Thailand.

The online booklet will be available at the ScandAsia.com website and at ISSUU and will be sent out as an e-booklet to 7,000 email addresses as well.

I wish you happy reading and a happy year 2022 in Thailand!

*Gregers Moller  
Publisher*



**SHREWSBURY  
INTERNATIONAL  
SCHOOL**

BANGKOK



## CLASS OF 2022 SUCCESS

STUDENTS OFFERED PLACES AT THE WORLD'S TOP UNIVERSITIES



**10**  
COUNTRIES

**120**  
GRADUATES

**3** OXBRIDGE  
**3** THE IVY LEAGUE

**10** TO STUDY MEDICINE

**10**  
Chula  
CHULALONGKORN UNIVERSITY

## ONE SCHOOL, TWO CAMPUSES. SHREWSBURY'S PATHWAY TO SUCCESS.

At both City Campus (2-11 years) and Riverside (3-18 years), Shrewsbury provides an expert-supported, enriching, and well-rounded learning experience that equips our students with the skills, character and qualifications to thrive in university and beyond.

Shrewsbury is now open for applications for August 2022 and 2023.



SUKHUMVIT  
RAMA 9

Shrewsbury City Campus  
Call: 02 203 1222  
enquiries-city@shrewsbury.ac.th  
city.shrewsbury.ac.th

f t y o i  
@SHBrivside



SATHON  
CHAROENKRUNG

Shrewsbury Riverside  
Call: 02 675 1888  
enquiries@shrewsbury.ac.th  
www.shrewsbury.ac.th

f t y o i  
@SHBcitycampus



Exceptional People • Outstanding Opportunities • Academic Excellence

LEARN MORE



## EMERGENCY NUMBERS

Police and general emergency call	191
General Emergency call	911
Medical emergency call	1669
Fire	199
Tourist Police	1155

## OTHER NUMBERS

Highway Police	1193
Traffic Information	1197
Ambulance and Rescue	1669
Crime suppression	1195
Missing children	1599
National Disaster Warning Centre	1860 or 192
Tourist Information Inquiry	1672

## EMBASSY CONTACTS

### ■ Denmark

Royal Danish Embassy  
Sathorn South Soi 1  
Bangkok 10500  
+66 (0)2 343 1100  
bkkamb@um.dk  
www.thailand.um.dk  
Ambassador:  
H.E. Jon Thorgaard

### ■ Finland

Embassy of Finland  
Athenee Tower, 14th Floor  
63 Wireless Road (Witthayu)  
Lumpini, Pathumwan  
Bangkok 10330  
+66 (0)2 207 8700  
sanomat.ban@formin.fi  
<https://finlandabroad.fi/web/tha/>  
Ambassador:  
H.E. Jyri Järviaho

### ■ Norway

Royal Norwegian Embassy  
UBC II Building, 18th floor  
591 Sukhumvit Road, Soi 33  
Bangkok 10110  
+66 (0)2 204 6500  
emb.bangkok@mfa.no  
<https://www.norway.no/thailand>  
Ambassador:  
H.E. Kjersti Rødsmoen

### ■ Sweden

Embassy of Sweden  
One Pacific Place, 20th Floor  
140 Sukhumvit Road (between soi 4 and 6)  
Bangkok 10110  
+66 (0)2 263 7200 - 1  
ambassaden.bangkok@gov.se  
<https://www.swedenabroad.se/sv/utlandsmyndigheter/thailand-bangkok/>  
Ambassador:  
H.E. Jon Åström Gröndahl

## FOREIGN EXCHANGE (AS OF JUNE 2022)

Danish Kroner	Swedish Krona	Norwegian Kroner	Finnish Euro	Thai Baht
20	28	27	2.71	100
			100	3,677
		100		363
	100			351
100				494

### MOBILE PHONES

The first thing you need is a Sim card with data transfer and some phone time. You can get that in any shop of the three main providers: True, Dtac or AIS. You will often find them in department stores. Don't forget to bring your passport. You may need help from a local with setting up the language setting of your phone so you can read your emails and surf websites and applications online, but mostly it works automatically. The staff where you bought the Sim card are usually willing to help you.

### INTERNET

With the spread of smartphones the number of internet users in Thailand has exploded and is probably today over 50 million people - although the vast majority don't think of themselves as surfing the internet, but only playing with their phone!

Currently, True is the largest regular internet provider in the country. Other companies




are AIS, DTAC, or 3BB. True provides home entertainment services with their True Move service as well. To get online with your laptop, you can either find a Wi-Fi spot in most restaurants or - for more mobility - buy a USB plugin that includes Wi-Fi access from your laptop, tablet or mobile phone. In Thailand they call them "aircards". If you bought a local sim card, you can also use your phone as your internet gateway either using Bluetooth or your data/charger cable - to turn it on, go to settings and turn on "mobile hotspot and tethering".

### LANGUAGE

If you plan to stay for six months and above in Thailand, it is highly recommended that you find a Thai language course near where you live. Do this as soon as possible because if you learn from friends and taxi drivers to say "turn left", "turn right" and "where is the toilet", you feel less of an urge to take this course. Soon your progress with the Thai language will come to a stop if you don't take a systematic approach. Do yourself a favour and take a course where they teach you how to read Thai - it is easier than you think. You can study online here <https://thai-language.com>

Thai, or more precisely Central Thai, is the national and official language of Thailand. It is spoken and understood by all Thai



people. But for many, their local dialect will remain their first language. Although most words are the same, these dialects will have a different sound and many of the words will be quite different from Central Thai. The Thai language is tonal and has a unique script with far more characters than the western alphabet. It has also three relational markers which help the Thai reader understand how the word is pronounced.

Some words in Thai have roots back to Pali, Sanskrit and Old Khmer. Some words have been assimilated from Chinese and recently, many words have been adopted from English, however these borrowed words are often used with a convenient abbreviation that makes it hard to recognise.

The most famous word adopted from French is the Thai word for all white-skinned foreigners, “farang”. The word comes from the Thai pronunciation of the country France, “Farangcet”.

## TRANSLATION

Google translate is quickly emerging as a good source of online translation from Thai to English or from English to Thai.

Online, the following service is free: <https://thai2english.com>, which is really good, and the equally exceptional learning portal <https://thai-language.com>.



For official translation of documents, there are many small and inexpensive service operators in the main tourist centres of Thailand. For translation and legal verification, visit the Thai Consulate on Chaengwattana in Bangkok.

### WEATHER

Thailand has a tropical climate, high in both temperature and humidity. April and May are the hottest months of the year. June brings the Southwest Monsoon and the rainy season until October. From November to the end of February, there is a cooling North East breeze and a reduction in the humidity level. It is always much cooler in the north where the temperature may occasionally drop to as low as 2°C.

For coastal weather, this website is great:

<http://www.buoyweather.com/map/gulf-of-thailand>

### CULTURE

The Thai culture incorporates cultural beliefs and characteristics indigenous to the area known as modern day Thailand. It is coupled with much influence from ancient India, China and Cambodia, along with the neighbouring prehistoric cultures of Southeast Asia. It is influenced primarily by Animism, Hinduism, Buddhism, as well as by later migrations from China and southern India.

### FOOD

The Thai cuisine is the national cuisine of Thailand. Blending elements of several Southeast Asian traditions, Thai cooking places emphasis on lightly prepared dishes with strong aromatic components. The spiciness of Thai cuisine is well known. As with other Asian cuisines, balance, detail and variety are of great significance





to Thai chefs. Thai food is known for its balance of three to four fundamental taste senses in each dish or the overall meal: sour, sweet, salty, and bitter.

## THAILAND NEWS

Thailand has a rich mix of English language media and even a few in various Nordic languages.

The Nordic news website <https://www.scandasia.com> serves news daily for Scandinavian residents in Thailand and other countries in South East Asia.

For residents in Pattaya, there is a Norwegian newspaper and a Nordic magazine apart from the local pattaya-people.com website.

The local news service in English is very good:

- Bangkok Post  
[www.bangkokpost.com/](http://www.bangkokpost.com/)
- The Nation  
[www.nationmultimedia.com](http://www.nationmultimedia.com)

- Thai PBS in English  
<http://englishnews.thaipbs.or.th/>
- Khaosod in English  
[www.khaosodenglish.com](http://www.khaosodenglish.com)

## VISA REGULATIONS

In the spring of 2020, the Covid-19 crisis blocked for a while foreigners completely from entering Thailand. Then certain categories of foreigners were gradually allowed to enter on various conditions. This gradual has now been completed, leaving only an insurance demand.

Before the Covid-19 changed everything, the following rules applied, and the aim is to return to this except for the need to have an adequate travel insurance.

### 1. Visa on arrival

If you are sure that you will not stay over 30 days in Thailand, there is no need to apply for a visa. Passport holders from all the Nordic countries will get permission to stay for 30 days if they arrive at an airport and

15 days if they arrive at a land checkpoint. Conditions are:

- a) your passport must be valid for at least 6 months on the day you enter
- b) you have proof of onward travel (confirmed air, train, bus or boat tickets)
- c) you have enough money to support yourself during the stay.

## 2. Tourist Visa

The Tourist Visa can be applied for at any embassy or consulate general outside Thailand. Applicants should submit a completed application form with a recent photograph. The application fee is 1,000 Baht (subject to change without notice).

Arrival with a Tourist Visa to Thailand gives you permission to stay up to 60 days if you arrive by air. If you arrive overland you may be refused entry if you have just stayed 30 days on a Visa on arrival prior to applying for the tourist visa, so it's better to fly.

## 3. Education Visa

Students at Government approved educational institutions can apply for a non-immigration ED (Education) visa. You can also start by coming to Thailand and then enroll in the school you choose. Often, students select the Thai language course. The school offers to handle all the paperwork, but most or all of the tuition fees must be paid up in advance. An education visa costs 2000 Baht (60 USD, 40 EUR - subject to change) paid to the Thai Embassy or Consulate. The tuition fee is not included in these fees.

## 4. Business Visa

If you want to work in Thailand, you will need a Business visa (non-Im 'B'). You have to apply at an embassy outside Thailand. The easiest is to start from your

home country, but if you are already in Thailand, we suggest applying at the Thai embassy in Singapore. The Royal Thai Embassy, Singapore has introduced Electronic Visa Application (EVA), so visa applicants must fill out the application forms, submit and check application status online. Applicants start by logging into the website <http://www.thaiembassy.sg/visaonline/>

The most important paperwork you need are:

- a) letter from your Thai company stating your position and salary.
- b) corporate registration papers from the employing Thai company.
- c) A WP3 letter from Ministry of Labour that your future employer will get for you. It is a kind of pre-approval of your work permit once you come into Thailand on your Business Visa.

A business visa does not allow you to work in Thailand but is the first step needed to apply for a work permit. Additional paperwork is needed if you intend to work as a teacher. The schools know what to provide and will hand you a bundle of documents for submission to the embassy.

## 5. Non "O" Visa

Applicants who have married a Thai national and wish to stay with their Thai family in Thailand can apply for a Non "O" visa. This type of visa is also the visa you need, if you wish to do volunteering work with the state enterprises or social welfare organizations in Thailand.

## 6. Retirement Visa

Those over the age of 50 can apply to live in Thailand for one year at a time using a retirement visa. The application starts with



obtaining a three-month retirement visa, also known as an “O-A” visa. Before you buy a home, consider in the beginning to rent a property instead.

To qualify for a retirement visa you need to have the following documents:

- a) Copy of your passport
- b) Passport photos
- c) Letter from bank showing 800,000 Baht deposit, or
- d) Proof of 65,000 Baht a month income
- e) Criminal record clearance from country of origin
- f) Medical certificate
- g) Completed application form

Attorneys can come in handy during the process especially if you want to bring some of your personal items from your home country which is one of the common issues that create confusion.

The financial requirements can be a combination of both income and fixed deposit. This needs to be calculated for you.

## VISA RUNS

Most foreign visitors to Thailand are granted a 30 day stay upon entry via airport, or 15 days via any land border if they arrive without a visa. Extending such a tourist visa without leaving the country costs 1900 baht and it used to be for max. one (1) week.

During the Covid crisis, this changed and visitors got up to 30 day extension.

When this will be stopped, the best destinations for a visa runs are Singapore and Malaysia are good destinations. There are frequent, inexpensive flights to and from Thailand, and there is no tourist visa fee for arriving in these countries.



**M**oving overseas is usually one of the biggest decisions and transitions in life. There are many factors to consider and incorporate and if the whole process isn't properly thought through and planned, then your overseas dream can quickly turn into a nightmare. There are often details, you forget. Both when moving out of your previous home and when moving the home into Thailand.

To help you avoid mistakes and experience as smooth a transition as possible, here are the top mistakes expats make when relocating abroad.

## 1. LACK OF RESEARCH

Research is the most important part of relocating abroad. As it's such a big move,

it is vital for you to know absolutely everything well in advance. Important aspects to look into include:

- What you can/can't take with you – e.g. your wine cellar will be too costly to move to Thailand
- Start looking into international removals firms as early as possible. It's important to know the ins and outs on everything
- Pricing and budgeting – How much will flights cost, how much will transportation cost etc...
- Accommodation – Will you need to downsize? What areas are best to live in?
- Are you able to take your pet(s) with you? What vaccines/medical documents do they need?



## 2. POOR ORGANISATION

As with research, poor organisation is often an aspect, which causes expats to make mistakes.

As soon as you know when you're moving and where, you should start organising things such as the relocation of your belongings, what you're going to take with you and what you're going to leave behind. The earlier this is done the better, as you'll be less inclined to make further mistakes if everything is organised and sorted well in advance. Will you put some objects in storage and transport only some abroad?

## 3. TIME MANAGEMENT

Although you may have planned to move months in advance, you'll be surprised how quickly your moving date can approach. For this reason, it is important for you to manage your time effectively. Start getting things done early, and only leave tasks till the last minute.

Once you have arrived you may be surprised at how long certain things take, for example how long it will take for your shipped belongings to arrive. For this reason, it is important to manage your time effectively.

## 4. NOT PACKING CORRECTLY

If you're sending a large majority of your stuff with a removals company, there is a possibility that you'll arrive before your belongings do. Therefore, it is important to factor this into your packing. Your suitcases should include everyday and work clothes, as well as toiletries etc. To be safe you should pack clothes to last you a few

weeks, that way you'll be covered if your belongings are delayed for any reason. In addition to this, pack sensibly. Don't move your entire winter wardrobe to Thailand.

## 5. INSUFFICIENT BUDGET

Expats often underestimate just how much it'll cost to relocate. Moving abroad contains many variables, so as part of your research and organisation you should start budgeting early. You should also have some money saved, to cover anything unexpected, which may occur.

## 6. CHOOSING THE WRONG REMOVALS COMPANY

As previously touched on, the organisation of your removals company is an important factor of your international move. As you may be sending the entirety of your belongings, it's important to know that they are in the best hands. Many expats often choose the cheapest option, due to the other high costs they may already be experiencing. This usually isn't the best approach. Instead, you should look into factors such as, previous customer feedback and ratings, experience and most importantly, what kind of insurance the company offers. These options are readily available on delivery comparison sites, such as AnyVan.com.

## 7. POOR COMMUNICATION

It's not uncommon for expats to only talk to the removals company to arrange the move and then not keep them updated. This can lead to problems, if you wish to add anything to your load, as the company may have only allocated space for everything you initially stated.



To avoid this, you should try and maintain good lines of communication between yourself and the company. As soon as anything changes, let them know, for example if you're adding or taking anything out of the shipment. If possible, you should provide the contact details of someone they can reach, should you be unavailable.

## 8. ACCOMMODATION

It's important to know where you'll be living. If possible, you should definitely visit your destination to house hunt and scout potential neighbourhoods. Moving home domestically in Thailand might be an avoidable cost? A mistake commonly made by expats is not measuring their furniture before moving, to see if it matches up with the dimensions of their new home. Before you visit, take measurements of everything you're planning on taking with you, this way you can avoid being stuck with furniture that doesn't fit.

## 9. FORGOT ABOUT YOUR PET

If you have a pet and would like to take it with you, the sooner you start planning your pet's relocation, the easier it will be. Once you know and have confirmed your destination, you will need to get your pet micro-chipped by your vet. Then you will need to have your pet immunised against rabies - at least 21 days before you are due to travel. Consider getting the help from a professional animal transportation company who can give you the practical advice of transferring your pet.

## 10. MONEY CONSIDERATION

Will you move your money? It is sensible to open a local bank account which helps with day to day banking. It is a question, whether you should close your bank account(s) at home. If you have ongoing transactions at home (for example direct debits or income from rent or social income), it would



be best to keep the account open. But you will be surprised to learn that some Nordic banks will force you to close your accounts even you would like to keep them.

## **11. NOT HAVING LOCAL INSURANCE**

Get informed about your short-term eligibility for medical care in Thailand. Your social security benefits in your home country does not help you here. A solution is to make a travel insurance for the first three months in Thailand, which gives you time to find a permanent solution. In Thailand, you don't have your regular doctor or General Practitioner. Instead, select a hospital and go there for a check-up so they will have your medical records.

Medical insurance is not all you need. Your property should be insured and you should have a personal liability insurance as well as an insurance on your car or motorcycle.

## **12. NOT HAVING A VALID DRIVING LICENSE**

Get an International Driving Permit before you leave. The International Driving Permit

is an annual permit which is recognised internationally, and normally allows you to drive a car or other motor vehicle when accompanied with a valid driving licence from home. But your home country will refuse to renew your license or replace a lost license if you don't live there permanently anymore. When in Thailand, pass a driving examination to get a local license.

## **13. DON'T FORGET POSTAL MAIL**

You don't want to miss important post, so you'll need to set up a mail redirection at the Post Office as soon as you know where you'll be living. There are charges to organise this, but the Post Office will redirect your mail for up to twelve months.

## **14. FORGETTING THAT YOU ARE MORTAL**

If you are considering retiring abroad, it is important that you plan your estate and what happens to it when you die. Different countries have different rules when it comes to tax and estate planning. The first step is to create a will. See article about this later.



**ASIAN TIGERS**  
GROUP

# LET'S GET MOVING

International, Local and Domestic Moving  
Office Moving  
Storage  
Home Finding  
Visa & Immigration  
Relocation Services

Omni



WORLDWIDE ERC®

+66 2687 7800



[asiantigersgroup.com/thailand](http://asiantigersgroup.com/thailand)



[inbound@asiantigers-thailand.com](mailto:inbound@asiantigers-thailand.com),  
[outbound@asiantigers-thailand.com](mailto:outbound@asiantigers-thailand.com)



**FOR  
SALE**

If you plan to stay in Thailand for more than a typical vacation, finding a place to live is top priority.

## RENTING

Though there are several options to choose from, it is advisable not to immediately jump into real estate and purchase a property. Renting an apartment until you are certain of your commitment level for purchase is better.

There are several types of accommodation in Thailand including high-rise apartments, condominium complexes, seaside bungalows and stand-alone houses available for rent.

Since foreigners are not allowed to own land in Thailand (see below), local landlords are sensitive to expats' rental needs, and do a good job of advertising available properties.

Individual rental agreements vary, so check the terms and conditions carefully. Most rental agreements are one-year contracts secured with a deposit. When you want to terminate the rent, the landlord must be informed at least 30 days in advance. If the agreement is terminated before the end of the signed agreement, the security deposit may be kept or returned based on the terms in the contract.

The tenant is responsible for any damage to the apartment or house as well as any

furnishings that came with the property. The security deposit will be retained to cover any damage or items missing from the property.

Local condominium apartments vary with location and design ranging from 4,000 to more than 14,000 Baht. In the most exclusive end of the market, rents up to 100,000 Baht per month are available. The high cost apartments are justified by excellent facilities and convenient location.

### *Tips*

Bargaining is often not an option on rental prices. Many landlords would rather leave their properties empty than compromise on the rental price they find reasonable.



A recent law that must be followed by companies and individuals who own more than five houses or apartment for rent, protects renters better than before, especially against sudden eviction, unannounced inspections, and excessive deposits.

To make sure that your deposit is refunded in full, take plenty of photos of the place, and conduct an inspection of the property with the landlord in attendance, pointing out to them any problems with the place. Since you are paying for your own electricity, water and telephone bills, be sure to conserve power whenever possible.

### HOME PURCHASE

Thai real estate is a complex area, so before contacting a real estate agents who have property for sale in Thailand, it may be more helpful to get to terms with the requirements of purchasing property in Thailand.

### Condominiums

Condominiums are equal to what we in the Nordic countries call apartments. On certain simple condition, foreigners may legally own a condominium in their own name.

1. And it must be above the third floor. That means your apartment must be on the 4th floor or higher up.
2. It must be within the 49 percent of all the condominiums in the building that foreigners may own. In other words, a foreigner may own a condominium as long as the condo is one of the foreign quotas of the building which can usually be no more than 49 percent of the total number of condos in the building.
3. The building must be registered in the category “condominium” at the district office. Check for this carefully before signing any agreement.





## Land

Foreigners are forbidden to own land. This includes attempts to evade the law through a Thai proxy or straw man/-woman - even when this would be your lawfully married wife - or a setting up of a Thai company with the purpose of evading this law.

Foreigners are welcome to purchase a land lease, also called leasehold. The maximum time limit for the land lease is 30 years and the lease must be written in Thai, although a translation may be filed along with the Thai-language contract. The contract must be recorded on the land title at the local Land Office to protect the foreigner from eviction in case for instance a new land owner would wish to build something on the land.

Once you own the land lease, you will automatically own the house, that you build on it.

## Professional assistance

Visit a few real estate agents before deciding who to rely on when requesting professional help to search for property. While real estate agents are good in assisting you in your research, they are seldom independent professionals. In Thailand, a property agency is often owned by the company who built the property which would be illegal in the Nordic countries.

Select your own lawyer. Don't rely on the sellers lawyer or the agency's lawyer. The ownership issue is important to arrange in a way that can not later be deemed a circumvention of the law by the Thai authorities. If you plan to build your own house, a lawyer is indispensable.

## BUILDING YOUR OWN

There are several procedures to go through prior to being able to build a



house in Thailand. Since foreigners are not allowed to own any land in Thailand, it is essential to consult an independent lawyer before going ahead with any type of building contract. You may for instance build a house on your wife's land, but that doesn't make it your house and in case of a conflict you may be kicked out.

Building permits are regulated by the Building Control Act and issued under the Town and City Planning Act. If the land to be used to build on has a clear and legal title deed, a building permit can be obtained at the Land Office. Usually, the builder applies for building permits on behalf of the construction owner.

### Other factors

There are other factors that are looked at and should be observed when applying for a building permit, which is where

a lawyer would come in very handy. Also, depending on which zone you have decided to build your house in, keep in mind that several zoning restrictions may apply.

Documents needed for acquiring a building permit include:

- a) Land Title Deed (called a Chanote) that allows for real ownership.
- b) Architectural drawings.
- c) Land Development permits: Land Trade and Distribution License.
- d) Infrastructure permits; Water, electricity and housing construction.

## HOME DECORATION

After making a decision and finally moving in to your new house - rented, purchased or built by yourself - it is time to turn it into a cozy and comfortable home. The Nordic kitchen concept that works as a living room has become popular.

## Building material and hardware

Moving in to a new home, there are probably a number of adjustments or minor changes you would like to make to your house. In Thailand, look for some of the large chains like ThaiWatsadu, which we recommend. But other good stores like HomeWorks and Homepro are also good. You will find a variety of hardware, do-it-yourself items, garden supplies, electrical items and tools that you can use for your home.

## Furniture

Depending on your desired design and trend, there are many stores which offer different varieties of furniture at attractive prices. There are a number of smaller,

more localized furniture shops with staff who can speak some English.

Asian furniture mixes nicely with Scandinavian style homes and will preserve unique memories from your stay in Thailand. One unique shop worth visiting is Abode Bangkok, where many of the items are built using reclaimed teak wood from houses, floors and walls.

Moving stuff from your home country here is a chapter by itself, but if you didn't bring anything with you from your previous home, there are furniture stores all over Thailand around such as Index Living Mall, Central Department Store, IKEA, and Koncept.

In Hua Hin, visit the Swedish owned The Cabinet for inspiration.





## FACILITIES

### Satellite TV

The biggest satellite TV provider is True Visions. It has a variety of channels including National Geographic, Star Movies, HBO, BBC World, Star Sports, Animal Planet, CNN, Cartoon Network among many others. The programs are available in different packages of varying costs depending on the channels that you chose. A monthly program guide will be sent to the subscriber's home address.

NETFLIX is an attractive alternative to a True package. That only means that you will have to watch news on your other devices.

To watch Scandinavian TV programs, you don't need a satellite. There are providers that offer Internet TV with modems, but it is even cheaper to open a VPN service with

a provider back home. Then you can also see the thousands of web pages, that the Thai censors do not allow the Thai people to see.

Simply search Google for "VPN services in Denmark, Sweden, Norway, Finland" and you have a handful of choices.

### Postal system

Thailand Post Company Limited owned by the state is Thailand's postal service provider. There are more than 3,000 post offices in Thailand with over 30,000 smaller, privately owned branch offices in various locations.

Most post offices operate from 08:30 to 16:30 and offer a variety of services other than postal services including money transfers, bill payments and a whole range of other business services.

Thai post office accepts mail with addresses written in English language as well as Thai language.

## HOUSEHOLD INSURANCE

A household insurance would be very useful in the case of unexpected damages that may occur to your home. In the case that you are renting your accommodation, it is encouraged that you don't rely on your landlord to already have some kind of coverage.

It is best to acquire an insurance that covers your home in the case of a fire, flood or theft. These are the extreme cases through which a huge amount of damage cannot be accounted for.



### Thailand's Official Specialized Dental Hospital

Award-Winning BIDH Dental Hospital on Sukhumvit Soi 2 provides professional dental services

- Missing Teeth Restoration (Dental Implants & Dentures)
- Cosmetic Dentistry (Veneers, Crowns, Teeth Whitening)
- Orthodontic Braces (Adults, Teens & Children)
- Pediatric Dentistry (oral check for babies 6 months and above)
- Sedative Dentistry (Sleep & IV Sedation) for Dentophobia and Dental Anxiety

Visit our alliance clinic BIDD at Emquarier, BIDD at Siam Paragon and JCI accredited BIDD dental center at Ratchadapisek.

**Bangkok International Dental Hospital (BIDH) Sukhumvit Soi 2, Ploenchit**  
Hospital-based Safety and International Sterilization Standards

**02 115 8977**  
[www.DentalHospitalThailand.com](http://www.DentalHospitalThailand.com)



Foreigners who wish to work in Thailand - regardless whether it is paid work or voluntary work - must have a work permit.

Foreigners are restricted from taking up certain occupations that are reserved for Thai nationals. Those include farm worker, hairdresser, pottery maker, shoe maker and over 39 other professions. While a new positive list is on its way, this negative list applies. But the foreigner may work in a company engaged in these sectors, for instance as export manager.

The official definition of “work” by the Ministry of Labour is “exerting energy or using knowledge whether or not in consideration of wages or other benefits”. Organisations representing foreigners working in Thailand have tried for years to request a more clear definition, but so far no Thai government has been willing to change the current regulations that could be abused by corrupt state officials when for instance retired persons are seen engaging in useful charity activities in their local environment.

A regulation to govern working as a digital nomad is way overdue, leaving thousands of digital nomads working technically illegal - and not paying taxes. The income of revenue department would benefit the nation more than the fines collected by the immigration police when arresting and deporting them.

## GETTING A WORK PERMIT

A work permit is issued by the Department of Employment, Ministry of Labour. In

applying for a work permit in Thailand, you need the assistance of your potential employer. The procedure is complex and involves the collection of a large amount of documentation.

In general, there are two criteria, that must be met. The employing company must employ at least four Thais for every foreigner whose work permit it sponsors, and the company must have a paid up share capital of no less than 2 million THB per foreigner it wishes to employ.

The normal procedure to gain a work permit after arriving in Thailand is first to travel abroad, e.g. to Singapore, with the papers prepared by your new employer in order to apply at a Thai embassy for a Non-Immigrant B Visa. Recently, this embassy has introduced online application procedures, so check that out first.

When you arrive back in Thailand with your Non-Immigration B visa, your employer can start applying for a work permit. It will usually be granted for either six months or one year regardless of your contract. Once issued, a Work Permit must be kept at the place of employment ready for inspection.





## Expiry

The Work Permit expires when the Non-Immigrant B Visa expires. Check the date of expiry of the visa and make sure it's renewed before the expiration date to avoid going through the entire application process again. **DO NOT leave the country without a re-entry permit in your passport** - if you don't have it, your visa will be cancelled automatically and you will only be able to return on a tourist visa. That means on your return to Thailand you will first have to obtain a new business visa, and then you will have to obtain a new work permit since the old one was linked to the now cancelled visa. A re-entry permit can be secured from a Thai Immigration Office or International Airport. The fees are 1,000 Baht for a single re-entry, and 3,800 Baht for a multiple re-entry permit.

A work permit is only valid for the specific job in the specific company for which it is issued, and at a specific location. Any change in duties or transfer to another employer must be applied for and approved in advance for a transfer or application of new work permit.

## Employment without permit

Penalties applicable to foreigners working without work permits can be quite harsh ranging from a fine from 2,000 to 100,000 THB and/or imprisonment and/or deportation. In addition to that, working without permit may result in other penalties being imposed under the Immigration Act prohibiting re-entrance to the country (blacklisted). In practice, however, the authorities usually settle the case and deport the person from Thailand. It is highly recommended that foreigners who wish to work in Thailand make an effort to apply for a proper work permit.

## JOB SEARCH

Looking for a job in Thailand may not be as difficult as you think. The newspapers carry job advertisements and there are several online job advertisement portals.

From there on, it is the same process as you would go through in any other country. It depends on the employers' needs and the job seeker's skills. The more specialised the skills, especially in the fields that are in higher demand, the better your chances.



Location is an important factor to consider. Tourist areas such as Bangkok, Pattaya, Hua Hin or Phuket pose stronger competition in the job market. Teaching is a primary job choice for many, but there are also opportunities in sectors such as banking and finance, computer and IT, sales, tourism, writing, administration and in areas using specialised skills.

Don't bother applying for jobs where the company has specified it as "Thai National Only". They cannot give you a work permit.

## START UP A BUSINESS

While foreigners may set up a company in Thailand, it is not a straightforward process and all company documents filed have to be in the Thai language. The help of a professional with experience in the field is highly recommended; there are restrictions on the type and activity of businesses that foreigners can be involved with under the Foreign Business Act and other legislation.

A breakdown of the procedures to starting your own business can be summarised with:

- a) Apply for permission to use company name
- b) Deposit paid-in capital in a bank
- c) Obtain a corporate seal
- d) Get approval for memorandum of association and apply to register the company as a legal entity (final registration) at the Private Limited Companies Registrar.
- e) Submit company work regulations to the Office of Labour Protection and Welfare of the Ministry of Labour at the district where the head office of the company is located.

Each of the above procedures may take a few days to process and some may require a fee to complete.

### Using a business law firms

Lawyers are quite useful for most transactions or signing of important documents as they are written in Thai. There are also certain regulations and procedures that an experienced lawyer would understand more than foreigners so they do not get stuck in any sticky situations.



Services which fall into this category include the drafting of public instruments, private contracts or agreements, registration and licensing requirements, notary services, personal legal documentation, and many others. It is best to get recommendations from people who have previously used lawyers. Some lawyers have a particular good reputation in the Scandinavian communities around the country.

## CHAMBERS OF COMMERCE

To get a network of business friends, it is recommended that you join the Chamber of Commerce covering your home country. There are four Nordic chambers of commerce in Thailand. Their full names are Danish-Thai Chamber of Commerce, Thai-Swedish Chamber of Commerce, Thai-Norwegian Chamber of Commerce and Thai-Finnish Chamber of Commerce.

Dancham, Swecham, Norcham and Thai-Finnish Chamber of Commerce, are organizations that offer news and information deemed useful for you. Members are informed of events, parties, latest news and much more of what is going on in the community.

Denmark - [www.dancham.or.th/](http://www.dancham.or.th/)

Norway - [www.norcham.com/](http://www.norcham.com/)

Sweden - [www.swecham.com/](http://www.swecham.com/)

Finland - [www.thaifin.org/](http://www.thaifin.org/)

## Networking

Business and social networking used to be events that everyone looked forward to. Recently, however, some chambers have started charging hefty tickets to events even though they are sponsored by a company.

However, if you don't mind paying to meet your friends, it is a good opportunity to mingle with other people of the same nationality as you.

Around four to six times a year, all the chambers in Thailand jointly come together for an all chamber networking event. At these networking events, you are chanced to meet some of the big guns in top organizations in Thailand. Following up on all contacts you gain through these events will also improve the chances of securing a job locally.

# CHIANG MAI GETAWAY

Akyra Manor Chiang Mai

## UNIQUE EXPERIENCES & ATTRACTIONS IN CHIANG MAI

Thailand's northern capital offers a diverse array of activities and attractions to inspire and engage guests during their stay. The hotel's designer facilities, bespoke services, and thriving urban location known for its buzzing, eclectic vibe offer unique opportunities for creative pursuits, cultural experiences and natural discoveries.



### Chiang Mai Getaway

- 3-day-2-night stay either in Deluxe Room or Premier Suite
- Daily Gourmet Breakfast
- 1 Thai Set Dinner at Italics Restaurant
- 1 In-room Couple Massage
- 1 bottle of Sparkling Wine
- 1 Round-trip Airport Transfers

From THB 9,999 net for double occupancy

Indulge in the comfort and convenience of akyra Long Stays. Book a minimum of 7-nights stay and discover hours of peaceful serenity with an array of complimentary services at your doorstep.

From THB 18,999 net per week.



BOOK DIRECT WITH US

[www.theakyra.com](http://www.theakyra.com)

[fo.akmc@theakyra.com](mailto:fo.akmc@theakyra.com)

+66 (0)5 321 6219



Chat with us on LINE





Living in Thailand is more affordable than living in the Nordic countries. This together with the general nature of the population and the climate makes Thailand an ideal country for retirement. In recent years, Nordic companies have started moving some tasks to be performed in Thailand. The same staff as before is doing the job, but maybe on a reduced salary. It is a win-win because having relocated to Thailand, the person will likely enjoy a higher standard of living for the reduced amount.

## **COST OF LIVING**

The general cost of living in Thailand can be very low or very high according to the chosen life style. Renting a fully equipped, high end condo in the heart of Bangkok, dining at western restaurants every day and visiting top nightclubs often

would certainly require an income of at least 150,000 THB. There are however alternatives to this. Renting a townhouse in the suburb of Bangkok for 15,000 THB per month is quite normal for the price conscious family.

Eating out every day, mostly Thai food with an occasional western treat, purchasing Thai goods from the supermarket, and going out once a week would probably come up to 30,000 - 40,000 THB.

Food, accommodation, and shopping can be obtained at very reasonable cost but as usual, the cost of living depends on location. Renting a furnished, modern house in places like Surin, Nong Kai or Korat would be less expensive than in Bangkok or any of the traditional tourist areas.





## BANKS AND ACCOUNTS

Expats are allowed to open a bank account in Thailand, but the process of doing so may not be that easy. Most banks will insist that you must have a work permit before you are able to open a bank account.

If you are staying on a retirement visa or an O-visa, a bank may be ready to allow you to open an account. Local banks in popular tourist areas are usually more helpful as they regularly deal with foreigners.

Best advice is to try a few different branches and a few different banks. Even different branches of the same bank interpret the conditions differently. The major Thai banks are Bangkok Bank, Krung Thai Bank, Kasikornbank, Siam Commercial Bank.

The alternative is to leave your money in a bank abroad and simply transfer the money you need using ATM machines or

charging payments to your bank card. Be sure to withdraw money in big amounts as there is a fixed bank fee of 150 THB for dispensing any amount of money from your foreign bank card using a Thai ATM machine. On top of that, your foreign bank may have additional charges.

## PRIVATE BANKING

One of the incentives for working abroad is the opportunity to save up more money than if you were working back home. Foreigners in Thailand pay taxes usually only on the amount they are being paid by their employer in Thailand and not on any additional benefits that the employer may pay into a retirement account elsewhere in the world. The new OECD simplified shared accounting system, whereby all tax authorities world wide share basic financial details about any individual does not seem to have changed this rule for the Thai revenue department.



# Trusted Novus Bank

We are here to make banking easy, personal and out of the ordinary.

Our clients enjoy that we speak English, Spanish, French, German and Danish and that they are covered by the Gibraltar Deposit Guarantee Scheme (GDGS), protecting them in the event of a credit institution being unable to repay depositors up to a €100,000 per named individual on an account.



Trusted Novus Bank - 76, Main Street - P.O. Box 143 - Gibraltar - GX11 1AA  
Tel: +350 2000 3000 - E-mail: [info@trustednovusbank.gi](mailto:info@trustednovusbank.gi) - Web: [www.trustednovusbank.gi](http://www.trustednovusbank.gi)

Trusted Novus Bank Limited is regulated by the Gibraltar Financial Services Commission, under permission number 3207



If you go out for networking events, you will soon get phone calls from international wealth management representatives who will ask you for a meeting where they will explain how they can make your money grow faster. While such a meeting may be educational, it is probably wise to investigate who these companies really are before you trust them with your hard earned saving.

Instead, you should consider contacting some of the private banking institutions that serve Scandinavians living in Asia. One such solid private banking partner is Trusted Novus Bank in Gibraltar, a bank with Danish roots, and employees that can assist you in English, Spanish, French, German and Danish. Trusted Novus Bank is covered by the Gibraltar Deposit Guarantee Scheme (GDGS), protecting them in the event of a credit institution being unable to repay depositors.

### INCOME TAX

Everyone, foreign or Thai, who works in Thailand or have taxable income must apply for a taxpayer's identification number which is issued by the Revenue Department on presentation of a Thai identification card or foreign passport and evidence of the need for the number.

Taxable Income (THB)	Tax (%)
0-150,000 Exempt	0
150,001 - 300,000	5
300,001 - 500,000	10
500,001 - 750,000	15
750,001 - 1,000,000	20
1,000,001 - 2,000,000	25
2,000,001 - 4,000,000	30
Over 4,000,000	35

A foreigner who lives in Thailand for more than 180 days in a tax year (the calendar year) is considered a Thai resident for tax purposes. A resident is required to file taxes on all income received within Thailand as well as income received from foreign sources brought into Thailand.

A non-resident living in Thailand less than 180 days within a tax year is only required to file a tax return and pay taxes on income received from sources within Thailand.

All foreigners who work in Thailand are generally required to hold a valid work permit for the position they hold. But a tax resident foreigner is liable to pay tax on income received, as set out above, regardless of whether they have a work permit. Recently, the tax structure was made more progressive following the following steps:

### TAXATION BREAKDOWN

#### Deductible expenses and allowances

Certain amounts can be deducted from your income:

- 50% deduction for normal wages income and copyright income mentioned, but maximum is 100,000 THB;
- 10 to 30% deduction for income from renting out a house or land, depending on the type of property;
- self-employed people may deduct up to 30% deduction or the actual expense if proof can be provided

#### You may also deduct:

- 60,000 THB basic amount for each the taxpayer and his/her spouse;
- 30,000 THB for each child (with a maximum of 45,000 THB);
- 2,000 THB educational allowance for each child;
- 30,000 THB per parent in Thailand (over 60 years old and with a yearly income less than 30,000 THB);

- 60,000 THB per disabled or incapacitated person who the taxpayer takes care of.
- Life insurance premiums (max. 100,000 THB);
- Health insurance contributions paid for the taxpayer's parents (max. 15,000 THB);
- Qualified provident fund payments (max. 500,000 THB);
- Interest on mortgages following the purchase of a residential building in Thailand are deductible up to an amount of 100,000 THB;
- Contributions to a Long Term Equity Fund up to 500,000 THB;
- Charitable contributions, but not exceeding 10% of the taxable income, and;
- Donations to educational institutions may be deducted for 200% (up to maximum 10% of the taxable income).

## WITHHOLDING TAX

Employers must withhold some of the money they pay to both foreigners and locals and deposit the withheld amount to the revenue department. There are different rates of withholding tax depending on the sort of income. If the foreigner is a local resident, the withholding tax can vary from 5 to 37 percent. If the foreigner is non-resident, the withholding is 15 percent.

The taxpayer will get a receipt of the amount withheld. After the year end, the taxpayer must declare his or her income and when the amount of tax to be paid is calculated, the money that was withheld or deposited through the year will be deducted. Then the tax payer will either get money back or will have to pay an additional tax.

## SOCIAL WELFARE FUND

All companies and employees including foreigners also have to make contributions to the Social Security Fund. The contribution amounts to 5% of the total salary but cannot be more than 750 Baht. As is the case in many countries, this fund serves for example for those who are injured, sick, disabled, or on maternity leave. Child welfare and unemployment (50% of the salary for maximum 180 days) are paid out of this fund as well.

Companies employing more than ten employees also have to pay a contribution to the Workmen's Compensation Fund, amounting to between 0.2% and 1% of the annual salary of the employee (depending on the assessed risks of the work). In case of injury, sickness, disablement or decease, the employee or the heirs will receive compensation (60% of the monthly salary) and reimbursement of certain costs out of this fund.





# How to pick an international school?

To decide on something as important as your child's education and well-being in a foreign country might be the toughest part about moving abroad.

Choosing a new school, pre-school, or kindergarten when moving to a new country has become increasingly difficult for parents. Each institution has its own unique philosophy and attributes and in some Asian cities, the choices are endless. Comparing what each place offers with the needs of your child is no simple task.

A good place to start is to check available options in your area and ask other parents of your own nationality or other expats which school they have chosen for their children and why. This may give you some indication of which schools are popular in your area and more importantly why before you make your own inquiry into each available option.

You can find a list of many associations and institutions for your nationality in your country of residence here.

## LOCAL VS INTERNATIONAL

The first thing you will have to decide on is whether you are looking for a local school or an international institution. In most countries in Asia, a local school is an option - although certainly a more challenging option for your child especially if they do not speak the local language. If your child is mixed Scandinavian - Asian this may, however, not be so frightening a prospect but it can still be a very different experience than your child has been used to in the past.

Local Thai schools offer a very local environment and teach after traditional local methods that are easier for younger children to adjust to because they have no previous school experience, but for older children, the cultural differences can be quite a shock and an important aspect to consider beforehand. Local schools, however, have an economic silver lining and are less costly compared to international schools.

Physical punishment has not been abolished in many Asian school systems, however, so talk to the school about how they administer physical punishment and ask if they can make an exception for your child if you are not comfortable with this.

If you go for an International school your child will be provided a curriculum that is not the national curriculum of the country it is located in. The most common national curricula used in international schools in Asia are the National Curriculum of England, or an American curriculum, or adapted versions of these.

An international school also provides an environment that is more familiar to that of Nordic schools and often overall has a more westernized set of guidelines and teachings. The environment of most international schools in Asia will still be vastly different from that of your own because it consists of children from around the world and your child will be exposed to a greater volume and variety of cultural influences than those who grow up in one particular cultural setting.



# Outdoor Learning

- why it is important now more than ever

From early years to IB, Outdoor learning has an integral place in every student's learning journey. Learning that takes place beyond the classroom provides unique and memorable learning experiences that enhances academic ability, well being and environmental stewardship. Here are just a few of the benefits of outdoor learning.

## Creating memorable learning experiences

Research suggests that learning that takes place in a variety of environments helps to create novelty, which allows a space for students to draw on their learning experience at a later date. Learning outside of the classroom can create opportunities for deeper understanding of the topic through hands-on activities. Such activities create an engaging experience which allows children to actively embrace the skill at hand and remember those skills as part of the experiential learning activity. The result is that children are later able to recall the skills and knowledge that was learnt whilst simultaneously recalling the fun experience they had while learning it! This experiential learning has been a foundation of pedagogy since the times of Aristotle, and has been a golden thread in the foundations of education philosophy around the world.

## Outdoor learning aids the transfer of knowledge

Experiential interactions enhance children's levels of meta-cognition, reflective thinking and transfer of knowledge. A lesson learnt during an outdoor experience will be a lesson transferred into many aspects of one's life. Through outdoor learning, children learn to understand their character and their limits, whilst also having the opportunity to reach their full potential and embrace all that their environment has to offer them. They will learn to be confident in the face of new challenges, whilst simultaneously being assured in their own ability.

*The Hunger Games* novels, for example, highlights the importance of survival skills over combat skills. As part of their curriculum, students learn that the outcome of many historical events, such as wars, were often due to the inability to meet the basic needs of survival rather than to combat.

Students can reinforce this knowledge through their own outdoor understanding of basic survival skills, and can in turn gain an empathy and deeper understanding of historical events whilst being able to use this experience in English comparisons.

## Outdoor learning promotes well being and environmental stewardship

It is well known that spending time outdoors helps us to connect with others, ourselves and the environment. It has also been shown to increase mindfulness, and even scientifically revitalises the body! Studies find that more time outdoors promotes happiness, boosts energy and helps with getting a good night's sleep; but it also helps us to appreciate the environment and encourages us to care for it!

More often than not, schools are working to integrate the outdoor environment into curriculums around the world. The **St. Andrews International Schools Group, Thailand**, are on the forefront of outdoor education, with outdoor assemblies and integrated forest school curriculums, as well as some of the most unique outdoor school environments in Thailand. Outdoor learning is embraced and children benefit from regular interactions with nature. So, what's stopping you from learning outdoors today?



St. Andrews  
International School

Dusit Green Valley Sathorn Sukhumvit 107  
[www.standrews-schools.com](http://www.standrews-schools.com)

A school where children become

# Global Citizens

Dusit | Ages 2 - 11

Green Valley | Ages 2 - 18

Sathorn | Ages 2 - 11

Sukhumvit 107 | Ages 2 - 18

St. Andrews International School offers the best of International Learning through a combination of the English National Curriculum and the International Baccalaureate Program. A world of opportunities awaits your child.

**For more information visit**  
[www.standrews-schools.com](http://www.standrews-schools.com)



St. Andrews  
International School

**COGNITA**  
An inspiring world of education



Both the benefits and challenges of either a local school or an international school are important and very relevant aspects of life abroad. Children studying abroad often develop a very different attitude to many issues compared to their former friends back home and even you yourself. On one hand, integration is essential and if your child is going to be raised in a culture that's not your own, it's your duty as a parent to facilitate that. On the other hand, as parents, it can be hard when parts of our own culture are lost as our children embrace a country that becomes home to them in a way it never can be to us.

Once this is said, most European families prefer the international option. In Bangkok you will find

- Bangkok International Preparatory & Secondary School (Bangkok Prep)
- Bangkok Patana School
- ISB International School Bangkok
- King's College International School Bangkok
- KIS International School
- Shrewsbury International School Bangkok Riverside
- Shrewsbury International School City Campus Bangkok

In Bangkok there are also several schools that share the words "St. Andrews" in their name, but the schools are members of two distinctly different networks. One network is called Cognita, the other is called Nord Anglia Education.

Cognita currently has four schools in Thailand:

- St. Andrews International School, Dusit
- St. Andrews International School, Green Valley
- St. Andrews International School, Sathorn
- St. Andrews International School, Sukhumvit 107

Nord Anglia Education network has currently two schools in Bangkok:

- St Andrews International School Bangkok - Primary School (Sukhumvit 71)
- St Andrews International School Bangkok - High School (Sukhumvit Rd)

In Pattaya, the preferred schools are either

- Regents International School Pattaya
- Rugby School Thailand

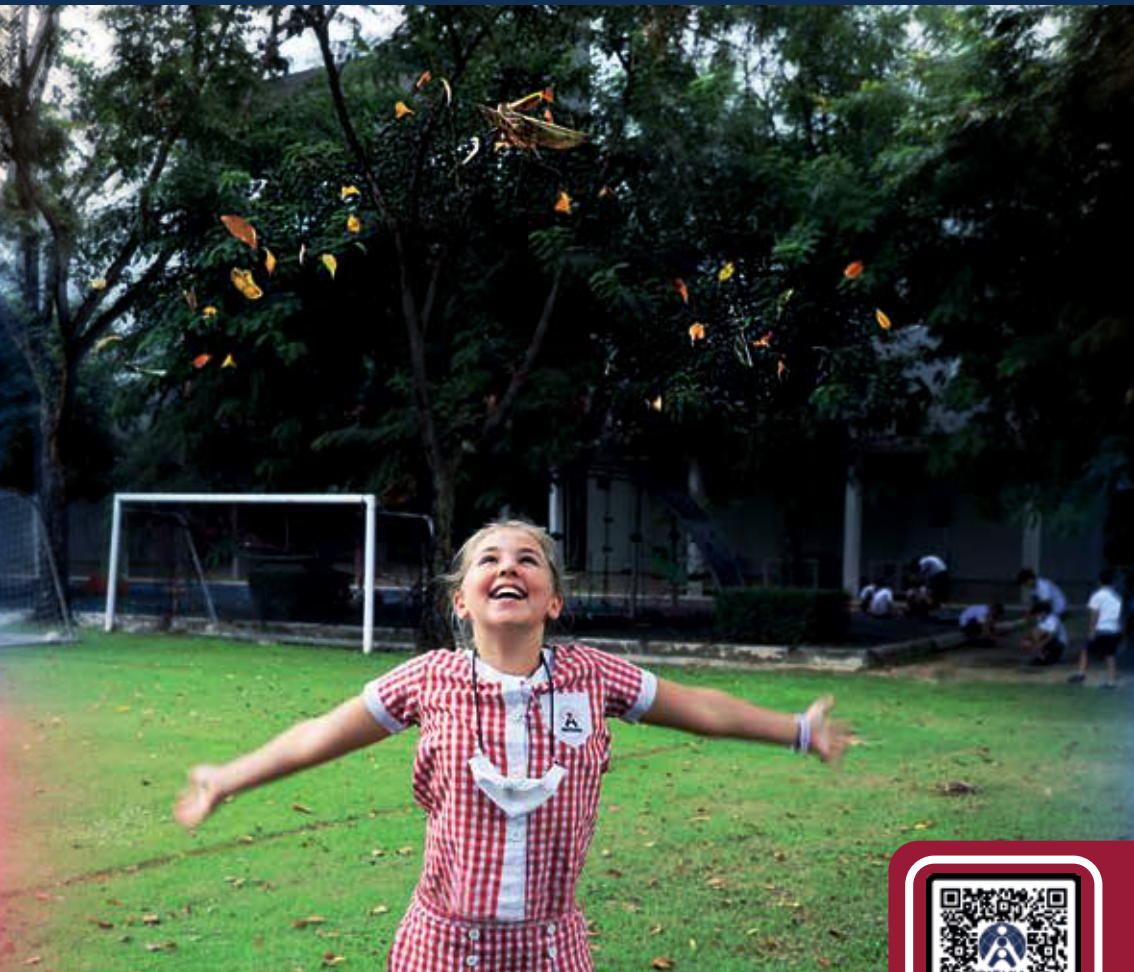
In Phuket, the preferred choice is BISP - British International School Phuket.

After 7th or 9th grade, other options like one of the excellent boarding schools back home in Europe or out here in Asia may be considered.

For most European children, classes in the mother tongue are available. For example the Danish community established a few years ago a solution whereby a Danish teacher can visit and teach Danish at a number of schools in the Bangkok area. For most nationalities, classes via the internet is also an option.

# A WORLD OF OPPORTUNITY

Choose the only school in Thailand included in the Spears list of the 100 best private schools in the world.



Give your child a **World of Opportunity** at Bangkok Patana School



SCAN ME

**Find out more about the Spears List**



**Bangkok Patana School**

*The British International School in Thailand  
Established 1957*

[admissions@patana.ac.th](mailto:admissions@patana.ac.th)

[www.patana.ac.th](http://www.patana.ac.th)

Tel: +66 (0) 2785 2200

Bangkok Patana is a not-for-profit, IB World School accredited by CIS

# IMPORTANT FACTORS TO CONSIDER WHEN CHOOSING THE RIGHT SCHOOL

So now you have the table filled with brochures of different schools and wonder what to look for. Keep in mind your family needs, and trust yourself to balance these with your child's needs and with your search for a good quality school. Here are a few suggestions to help you make up your mind:



## First: How much does the school cost?

Before spending time looking through school courses, you need to make sure that you can afford to send your child to the school. Local schools tend to be very affordable but annual tuition fees among international schools in Asia can range from \$1,800 to \$24,000. International schools have between three to four terms per school year and normally fees are paid termly. Some International schools allow parents to pay tuition fees monthly but if this is a requirement from you, you need to check with the school first to see if that is allowed.

Annual tuition fees are not a sure indicator that the more expensive the school is, the better education and experience your child will have. Smaller schools with fewer facilities can sometimes be less costly but they can still be an excellent choice with a more close-knit community within the school.

## Second: How far away is the school from your home?

Another important factor that may eliminate a few options for you easily is how far away the school is located. Bear in mind that in most big cities, it is the traveling time between your home and the school that matters and especially in larger cities, you will be challenged by some very heavy rush hour traffic. How long will it take for your child to get to school and home afterward? How will your child be going there? Coordination if you have several children under education, etc.

## Third: What reputation does the school have?

Talk to people as much as possible. This is where your first intuition comes in handy and if many say the same it is probably



ST ANDREWS INTERNATIONAL SCHOOL  
BANGKOK  
A NORD ANGLIA EDUCATION SCHOOL

G  
R  
E  
A  
T  
  
M  
E  
M  
O  
R  
I  
E  
S

## WHERE GREAT MEMORIES ARE MADE...

The best stories you have from school aren't always written in the classroom. It maybe playtime with friends or exploring the school. Much of the curriculum at St Andrews Bangkok is delivered in ways that encourage discovery, multi-sensory exploration and role-play. We follow your child's interests and provide them with flexible learning opportunities across all areas of development.



Gift your child with lifelong memories at  
[www.standrews.ac.th](http://www.standrews.ac.th)

*Book a school visit with us today and receive  
a personalised admissions experience.*



true. Don't listen to opinions expressed by people who have no children at the school themselves - parents are quick to seek confirmation of their own choice by adopting opinions about the competing schools.

The age of the school is no sure indication either. Nothing guarantees that the reputation of a hundred-year-old school is better than a one-year-old school.

#### **Fourth: What are the school's fundamental principles?**

Repeated, unbiased research shows that all truly outstanding schools adhere to certain principles. While all are important, the two most important factors are:

1. The school has high expectations for all students. It means all students are expected & helped to meet high minimum goals; goals are raised for individual students as soon as they are ready to learn beyond grade level.

Avoid schools that make excuses for kids who are behind academically. If your child struggles, they may make excuses rather than help your child, too. Also, avoid schools that pretend none of their students struggle.

All schools have more than a few students who face learning challenges at some point. You need to know in advance how the school will respond.

2. The school monitors progress and adjusts teaching. It means the school assesses individual student progress often and changes teaching approaches to ensure that every child locks onto learning. This is especially important if your child is learning a new language as he or she may have mastered math in your native language, but having difficulties with mathematical terms in another language.

Choose a school that will keep your child's levels up but will adjust teaching



REGENTS  
INTERNATIONAL SCHOOL  
PATTAYA  
A NORD ANGLIA EDUCATION SCHOOL

## PERSONALISED PATHWAY TO THE WORLD'S TOP UNIVERSITIES

The only school in the area to offer both the International Baccalaureate Diploma Programme AND the A Level system to 16-18 year olds

*Discover* Sixth Form at Regents International School Pattaya

[regents-pattaya.co.th](http://regents-pattaya.co.th)



approaches to make sure the right language skills are taught at the same time.

### **Fifth: How are the courses at the school and do they match my child's needs?**

All children need a school that will appropriately challenge and nurture them to succeed in core academic subjects, but research shows you can significantly improve your child's life and school performance by choosing and working with the right school, so you have plenty of reasons to give it your best effort.

The school's courses and programs will most likely be listed in the school's information packages. They will talk about British Curriculum and American Curriculum and - what most Scandinavians these days go for - the IB curriculum.

This is important if you relocate in the future so choose what fits best with the school system back home. Both the British Curriculum and the American Curriculum, however, are recognized and accepted worldwide.

Ask questions about the tests and exams which are offered and used as an evaluation method. Some international schools require a certain level of English language skills before accepting new students and it is, therefore, an important factor to look into if your child has little or no English language skills. Some international schools offer pre-language courses to help your child to an easier start and some international schools offer private tutoring to help your child excel faster once accepted into the school. If your child is already a secondary school student, ask how well the graduating students do in getting accepted into major universities both in your current country, back home, and elsewhere overseas.

You can also find out if the native language and culture of your child is taught as optional learning as your child needs to keep his or her ties to your cultural background. It is also important for you. If such optional learning is not offered, most Asian cities have local Scandinavian communities where native Nordic languages often are taught as an after-school activity.



# BANGKOK PREP

Bangkok International Preparatory & Secondary School

Est. 2003



## One school, two campuses

The only British international school in the central Sukhumvit area that offers a British Education Curriculum from EYFS to A Level in a truly international learning community.



**Bangkok International Preparatory & Secondary School**

**Primary campus at Sukhumvit 53**

23 Sukhumvit 53, Vadhana, Bangkok 10110

**Secondary campus at T77 On nut**

77 Sukhumvit 77, Vadhana, Bangkok 10110

**Phone:** 02-700-5858

**Email:** [admissions@bkipprep.ac.th](mailto:admissions@bkipprep.ac.th)

**Web:** [bangkokprep.ac.th](http://bangkokprep.ac.th)

**f @ v** [bangkokprep](#)



### **Sixth: What other activities can the school offer your child?**

Besides the fundamental course works, what kind of arts, sports, community service does the school offer? Are there proper facilities to support those activities?

It seems that schools almost compete with each other when it comes to sports, thus many schools will have gymnasiums and sports complexes, which are either new or

remodeled. But maybe your child is more into other activities - computer programming, performing arts?

Most schools offer after-school/weekend programs as well as field trips and community services. You should be able to freely pick the activities that best suit your child. Engaging in after-school activities is also an excellent way for your child to make new friends faster.

### **Seventh: Does the school have qualified personnel?**

This is not as obvious as you may think. The school is most likely private and qualifications for employment are not always as strict as for schools back home. What educational degree do they hold? How long have they been teaching at the school? What kind of teaching methods do they prefer? Are they involved in planning and evaluating the curriculum? Will they be giving special attention to each child's problems or personal needs? And more importantly, what do they do to make sure new students are welcomed and able to settle in the smoothest way possible.

### **Eight: What do the current students think of the school?**

If it's possible, talk to some of the existing students. Are they happy there? Do they look motivated to learn? How will the school help your child get started? Do they assign so-called "buddies" (another student from the same country) for new students? Most schools have established student organizations to provide service to students at a personal level. Here, students can get help with studying, working, individual needs, and so on.



“ Education is the foundation upon which we build our future. ”

- Christine Gregoire ”

At KIS International School in Bangkok, all students shine. Our students are confident learners, whose unique dreams and strengths flourish in our mid-sized caring community.

KIS is a full IB school, offering the **International Baccalaureate** Programmes for all age groups (Primary Years Programme, Middle Years Programme, Diploma Programme, and Career-related Programme), ensuring a holistic and challenging academic experience that not only prepares students to be successful at university, but also teaches important skills for life.

+66 (0) 2274 3444 | [admissions@kis.ac.th](mailto:admissions@kis.ac.th) | [www.kis.ac.th](http://www.kis.ac.th)



*inspiring individuals*



### **Ninth: How is the relationship between the school and the parents?**

You will obviously not be able to monitor your child in school. The teacher will have to be your eyes and ears. You must be notified of your child's functionality regardless of grade, and regardless of whether it includes bad behavior or progress your child has made. Make sure that you can get informed as often as possible especially in the beginning to make sure your child settles in well at school. You may also join a parents' volunteer program if available. Some schools may offer activities for the whole family as well.

Your most important task after selecting a school - watch your child!

Moving to a new country, enrolling at a new school, and having a daily life in another language is an adjustment especially for children. It is therefore important that you

make a habit of spending more time than you used to back home talking to your child about how school was today. What they did in class, and what they did outside. Let her or him tell you about their new friends. Listen.

All may initially sound fine and uncomplicated, but that may just be a honeymoon period. Your child will be filled with new impressions and new ways of doing things and therefore, this is the most important step of them all. If your child develops in any way you find disturbing or even develops signs of discomfort with going to school, you should think twice before you tell your child that "this is life - it is not always pleasant!". Allow them to adjust, support them in their transition and understand that this may be hard for them. They might feel frustrated that they can not communicate as freely at school as they are used to in their native language so have patience with them. Help them establish friendships

outside school by inviting classmates home for playdates as this also helps your child speak the language much faster.

The process of starting in a new school abroad can also be hard for parents so speak to other parents who have gone through the same and listen to their advice. Things might not happen as fast as you would like them too but trust the process. Accept that the transition takes time and remember that after a few months, most kids suddenly excel at life abroad.



## FINAL THOUGHTS

The perfect recipe for choosing the ‘ideal’ school for your child does not exist. Many parents simply go by their own parental instincts. This is natural, and there is certainly nothing wrong with trusting your own instinct in the process. After all, you should feel comfortable and confident in leaving your child at the school gate in the mornings. Never mind how diligent you do your homework - and maybe the above list is a bit excessive - you will never be able to foresee if your child will thrive at the school.

However, the few professional tips and suggestions above should give you some ideas about what to look for when making up your mind. Keep in mind the important role you are taking in deciding the right choice for your child’s new school will contribute to your child’s progress toward a crucial foundation and an enjoyable schooling experience.

**RUGBY SCHOOL THAILAND**

We are an award-winning British international school within easy reach of Bangkok. Our School ethos, 'The Whole Person, The Whole Point', promotes a dynamic, happy and active lifestyle for day and boarding students aged 2-18 years-old.

[www.rugbyschool.ac.th](http://www.rugbyschool.ac.th)



## SHINE BRIGHTER AND GO FURTHER AT KING'S BANGKOK



King's Bangkok is welcoming children from Early Years to the Senior School.

As part of our admissions process, we interview every family to ensure that they understand our values at King's Bangkok and that they are making the right choice when deciding to trust us with their children. We ask parents what it is that they want for their children when they are at school and we get a huge variety of answers, from the chance to attend a top university, to developing exceptional language skills, to the opportunity to take part in a wide range of activities. However, when we probe a

little further, there is always one central reason why parents choose to send their children to King's Bangkok: because they want them to be happy. Below we explain how happiness is a by-product of our mission to help students shine brighter and go further.

### KNOW THYSELF

Above one of the classrooms at King's College School, Wimbledon - our founding school - is the maxim 'know thyself'. At King's Bangkok, this has been transformed into our focus on 'wisdom', which we see as the ability to understand yourself. Through self-knowledge, students are able to understand themselves, their feelings and emotions, but they also understand what makes them happy. We achieve this wisdom by letting students reflect on problems set and try to solve things for themselves. However, students cannot understand themselves fully unless they are given opportunities and encouragement to try a wide variety of activities in an environment where they feel safe to fail. Through exceptional facilities, wonderfully supportive staff, and



a culture of kindness, our students learn to find themselves through the extensive co-curricular activities on offer. When they graduate from King's, they will know themselves and they will have discovered where their talents lie.

## FRIENDSHIPS

The biggest worry for families changing schools is often around friendships: will my child build new relationships that help them to feel comfortable being themselves in a new environment? If schools simply focus on academic performance, competition and exam results, then we will not see the best of our children. In order to be truly successful, students need to be truly happy, and in order to give their best, all students need to have people they enjoy spending time with; they need a family in their new home. Therefore, at King's Bangkok we spend a great deal of time helping students form friendships across the school. We do this by providing a number of team building activities throughout the year, by placing students in houses, and designing house events to allow students to come together across multiple year groups to work together in the spirit of friendly competition.



## TEACHERS

In choosing a school, we choose a new society for our children, one which mirrors our values. At King's Bangkok, the parents mirror our values of kindness, good manners and wisdom. We teach these values to children by providing them with role models who show them how to behave. Our teachers are at the forefront of our



values-based approach and every one of them has been chosen for the way in which they nurture students to help them develop into happy adults. All of our teachers go through an extensive application process, which culminates in an interview with King's Wimbledon to ensure that the success in the UK will be mirrored in Bangkok. The way our teachers value every individual student helps our students to be happy to come to school each day.

## SHINE BRIGHTER

The students at King's Bangkok are able to shine brighter and go further, as we place their happiness and self-esteem at the centre of our education. By focusing on wellbeing, we are able to help each student to do their best. By giving them an incredible breadth of opportunity, and supporting them with the best possible teaching staff, our students can achieve so much more than they may have ever imagined. What is most important is that they can do all this with a smile on their face and something special growing in their heart.

We are very proud of our school and the community that we have developed at King's Bangkok. So whether you are looking for a place for your child in Early Years, or if your child needs a new challenge in the Primary or Senior School, King's Bangkok may be the place for you. We are currently accepting applications for all ages, so please find out more on [www.kingsbangkok.ac.th](http://www.kingsbangkok.ac.th) or call +66 (0) 2481 9955.

## BOARDING SCHOOL BENEFITS

The expat lifestyle provides many practical reasons for parents and their children to prefer a boarding school, but the advantages of a boarding experience can go far beyond that.

A boarding school is a school where the students live because their parents want them to obtain the special benefits of this kind of education or because they cannot live at home and attend a local school because of their parents assignment to a location without a proper school. In a few cases, the reason is also because of problems between the parents.

Whatever the reason, the boarding school experience has many advantages, like small class sizes, diverse curricula, and individual attention from teachers and advisers.

In Thailand, Regents International School Pattaya, Rugby School Thailand and British International School Phuket are excellent schools with boarding options that also are preferred as a day school by many local expat families.

### KEY POINTS TO CONSIDER

At a boarding school there will always be an adult and mature person to talk to.



There will always be at least one adult at the boarding school who is ultimately responsible for each single student. There are regular contact persons whom parents, other family members, social workers or if needed special advisors can interact with.

Attending a boarding school will give the student a fresh start. The teachers and house masters at the boarding school will make sure that the students attend to their classes every day, that they receive the education they need, that they take part in healthy activities after school and learn how to socialize with other children their own age.

After school, life at the boarding school is the perfect frame for healthy activities with friends.

Part of what a boarding school offers is also often a plan of action for each individual student, attention to special individual educational needs or tutoring in a close cooperation with the student and his/her parents.

### FOCUSED ATTENTION

The fact that students as well as teachers live on campus allows for more focused attention on the whole individual student, and he or she will be able to become absorbed in different subjects and receive the help they need along the way.

One of the unique qualities of attending a boarding school is the complete integration between the life of the student in class and the life of the student after class. This seamless transition in the everyday life of the boarding school student from one sphere to the other gives a maximum cohesion that ordinary day schools will never be able to match no matter how extensive an extra curricular programme they might establish.



Inspire  
**Learning**

Nurture  
**Wellbeing**

Ignite  
**Passion**



Medical services in Thailand are generally praised by foreigners living here as of high standard and relatively affordable. In all the major tourist destinations, Thailand's health care system provides both public and private hospitals or clinics staffed by well-trained doctors and nurses. An ambulance can be summoned from a private hospital in the case of an emergency.

In Bangkok, Bangkok Hospital is considered as a provider of top quality medical treatment with a service standard that may indeed make your hospital stay a great pleasure. For dental treatment, Bangkok International Dental Hospital (BIDH) at Sukhumvit 2 is an award-winning and one of the top dental providers in Thailand.

Watch out that you have valid health insurance, or else it may be incredibly expensive. Accidents happen – and they

can happen in the strangest places at the strangest times, like on the side of a mountain in Krabi or in an alley in Bangkok at 3 am. Travel insurance can cover you for all sorts of mishaps during your travel.

A special warning should be given to people who extend their stay beyond their initial planned vacation: Do not forget to also extend your insurance!

A word about vaccinations against various tropical diseases should be included here. Although vaccinations for e.g. malaria and Japanese encephalitis are recommended by the authorities in your home country, it is worth a thought that most people living in Thailand do not have these expensive vaccinations. If you're planning on trekking or passing through the more remote areas, then check out the list of recommended vaccinations for visits to Thailand. Otherwise, consider not taking them.





## MEDICAL TOURISM

Thailand has over the past two decades emerged as a regional leader in what has been called Medical Tourism. It covers the full spectrum from expecting mothers traveling from Laos or Cambodia to give birth in Bangkok to major dental works and elaborate beautification operations like reducing belly fat and enlargement of - or creation of - female breasts.

Unlike most Western countries, the cost of private medical treatment is cost effective. Treatments are usually cheaper than what it would be back home, plus you do not need to wait on long lists of other patients. One can just about get the procedure done “on arrival” and recover at one of Thailand’s many wonderful beach resorts - a pretty good offer to beat.

High marks are usually given to Thai hospitals from embassies of many countries. Are there risks involved going for medical treatment in Thailand? Yes, but this is true for any country.

First, there are many countries that have

different diseases. Second, there may not be a great avenue (if any) to lodge complaints. For each particular treatment, you should do your own research to plan for the possibility that things don’t go as expected.

## HEALTH CARE FOR THAIS

One of the benefits of living and working Thailand is that you would be covered under the Thai healthcare system. This applies to people working for a company or government entity. However, business owners and shareholders would not be entitled to coverage.







For Thai people, Thailand currently has three major healthcare schemes: The universal healthcare scheme, the health-benefit part of the social-security scheme, and the healthcare programme for civil servants and their family members.

The first programme covers about 48 million people. The second programme covers 9.4 million subscribers. The third scheme takes care of some 5 million civil servants and their families.



Almost 50 years of expertise, we have served international expats based in Asia at the highest internationally accredited care level including professional medical evacuation services.

Our continuously expanding excellence includes:

-  Neuroscience Center
-  Spine Center
-  Orthopedic Center
-  FIFA-Accredited Sports Medicine Center
-  Bangkok Heart Hospital
-  Bangkok Cancer Hospital





Going to the beach is not limited to a particular time of the year when you are living in Thailand. Anytime you feel like it you can just grab your beach bag and go for a single day, a long weekend or a full week of basking in the sun, swimming in the ocean, building castles with the kids in the sand and indulge in great, fresh seafood in the evening.

## WE ARE SPOILED!

Families flock to Thailand from all over the world for those all inclusive resorts that offer watersports, family activities, elaborate pools and even on-site water parks. At some resorts, kids' programs are outstanding, with separate activities for many different age groups, plus teen programs and nurseries.

Living in Thailand, we often forget that these vacation opportunities are right here on our own door step, so much more affordable and with a choice so much wider than if you are sitting with a catalogue back home in Scandinavia.

Recently, staying totally nude all day during your vacation has become an option at

a string of naturist or nudist resorts linked together under the umbrella of Naturist Association Thailand. These resorts offer recreation in a non-sexual, family inclusive setting. A great way to relax after a day out exploring the local life and a bit of sightseeing.

## CURE FOR WORKAHOLICS

For many expat families living in Thailand, one serious reason to go for a beach vacation is the fact that the bread winner - often the father of the family - is quite hard working. He will often spend up to eighty hours working each week and although his income is appreciated by his wife and children, they often need his attention and affection more.

This is where a beach vacation is better than any other form of recreation because it gets you away from the routines of life. There is no need to talk on cell phones, check emails, or be running here and there every evening to attend meetings or events.

A beach vacation is the perfect getaway for couples and families that need to relax and be unrestricted in time together. You can spend a full day simply enjoying the beach, play in the water, go to your room and make love in the bathtub or explore other ways of spending time together. There is perhaps nothing as therapeutic for a family than extended time together.

Go for that beach vacation! Get high on the smell of the ocean, the sound of the waves. Rediscover your life.





## EXTRA TIP

Here are a few small suggestions that can be useful for added pleasure.

Avoid “project building”. The more spontaneous a beach vacation comes, the better. The formula is simple: Expect less, appreciate more.

Check your health insurance. If you’ll be boating, parasailing, diving or participating in other potentially dangerous water sports, ask your health insurance if you are covered should you get hurt. A word of advice, though, do not rent jet-skis or water scooters - operators are known to scam foreigners and claim compensation for fake damages.

Coastal living is great. Why not shop a bit around at see what kind of house or condominium you could buy or rent. Just in case you should ever actually take that “Thaime out” which is such a fun idea play with.

Make a list of “next time we get here”. Then start doing them one by one. Live life like you got one!

## PACKING LIST

Here is a quick list of things to pack in that “spontaneous” beach bag of yours:

- Sun block or tanning cream
- Lip balm with sunscreen
- An extra suitswimsuit (two, per person)
- Aqua shoes
- Swim goggles
- Sunglasses
- Shorts and a sarong
- Beach & water toys
- Light reading material
- Ear plugs if your child needs them when swimming
- Insect repellent
- Afterbite, for insect bites
- Band-aids
- Contraception
- Needle and thread
- Plastic food container.

## WATCH OUT FOR SUNBURN

Enjoying leisure time in the sun is quite appealing and there are more benefit than health risks in doing so, but be careful out there. The sun has a lot of power.

Do protect yourself even on a cloudy day. Clouds can be dangerous because they can create a magnifying effect with the sun. Also, if the clouds are very high 95% of solar radiation passes through them.

Do take into account factors such as the color of water and sand. In places where crystal clear waters and white sand, the sun is more dangerous because their impact is reflected and multiplied.

Do not assume a “water-resistant” or “waterproof” sunscreen will last longer. Even

these formulas will wear off after 30 minutes or more spent in the water or after excessive sweating. They can also easily rub off when you towel-dry after a swim.

Do stay out of the sun in the middle of the day. The sun’s rays are at their strongest between 10 a.m. and 4 p.m., so direct sun exposure is best avoided during that time .

Do not panic if you get sunburned. Most burns can be treated with cool baths, moisturizers, over-the-counter hydro cortisone creams, and an anti-inflammatory, such as aspirin or ibuprofen. However, if you also have a headache, chills, or a fever, you may be suffering from heatstroke as well. Seek medical help immediately if this is the case.



**DOLPHIN BAY RESORT** is a family run beach resort in Sam Roi Yot National Park, offering comfortable rooms, suites & pool villas. Enjoy a relaxing holiday away from the crowd where there's something for everyone.

Phang Nga Cave  
Bungalow Pool Villa  
Café Loma  
Phang Nga Cave

[www.dolphinbayresort.com](http://www.dolphinbayresort.com) - +66 (0) 3282 5190 - LINE @dolphinbayresort

Many expats living in Thailand consider playing golf an important part of their lives. They are joined every year as fall and winter approaches by migrating golfers who come to Thailand to play more golf in one of Asia's golf densest countries.

Golf in Thailand is usually played in high temperatures placing added emphasis on the importance of the - mandatory! - caddy, food and beverages services, and extensive changing, washroom and spa facilities at the club house for getting yourself re-energised after the round.

Green fees also remain below many competing destinations when considering the very high quality of the golf courses and resorts.

## LEARNING GOLF AS A FAMILY

Beginners and juniors are welcome on Thailand's golf courses. The attitude is that if you've paid a green fee, you can play – as long as it's not to the detriment of the course or the other players.

But if neither the parents nor the kids have ever played before, the starting point is usually one of the golfing schools or academies or even the local driving range; the young ones can start from six years old to make a start.

Where ever you are in Thailand a driving range won't be too far away. For a handful of Thai Baht for a tray of balls, both grownups and kids can have fun learning how to hit the ball by watching the pros before having a go themselves. Almost





every range has a pro standing by in some shape or form; some are USGA or Thai PGA qualified or are former touring pros plying their trade.

Many of the international schools in Thailand have full golfing programs and either have in-house teachers or employ the regular services of a local golf pro from one of the courses or driving ranges; so once or twice a week the kids are getting proper schooling in the technicalities as well as the etiquette of the game.



A great way to get started both for grown-ups and kids is to visit one of several par 3 courses that exist around the country, if possible during the week when they're not so crowded. It's also best to avoid rainy days.

## THAI NORDIC GOLF SOCIETY

Monthly Tournaments of the Thai Nordic Golf Society is played using stableford system. Members with a valid handicap are divided into 2 groups (as per TGA handicap):

Gold Flight: Handicap 0 - 18.4

Silver Flight: Handicap 18.5 - 32

Guest Players and members with no TGA handicap, will play in the guest group.

Longstayers or residents who would like to have an official handicap issued can join the Thailand Golf Association (TGA), and Thai Nordic Golf Society will be happy to assist members apply for the TGA membership.

To join Thai Nordic Golf Society, visit <https://tna.or.th/golf-section/>





# How to die in Thailand

If you die in Thailand and have not made arrangements in advance, you are the only person to blame for the big mess that you leave behind.

In Thailand, it is necessary to report any death to the police within 24 hours. This is the case even if the death is expected such as after an illness or accident. The police are then responsible for contacting the appropriate Embassy, who will inform the relatives back home.

The cause of death will have to be determined by the Examining Magistrate, so the body will be sent to their department for examination. The body is generally released to the family within three days of the examination for a cause of death that is not suspicious.

The death certificate will then be issued

automatically by the office. If the cause of death is deemed suspicious or as a result of possible criminal activity, the body will be held pending investigation. A civil registry death certificate and a doctor's death certificate will be issued automatically by the office when the body is released. The death is automatically registered in this way, and there is no need for the family to visit the local registry office. The body will only be released once all medical bills and charges for hospital stays have been cleared.

## WHO WANTS YOUR BODY?

Every year, several of the Nordic expats who die in Thailand end up being cremated at a random monastery as unwanted bodies. This is not because their identities are not known - they have been identified, but nobody out here and nobody back in



the Nordics have any affection left for the deceased. So they inform the embassy that they are OK with the deceased being cremated along with other people with no relatives and the ashes scattered in the river or otherwise respectfully disposed of.

Repatriating a deceased person is also an expensive affair. The cost of sending a body home is around 35.000 DKK. It includes embalming, a metal coffin and all documents needed. Sending an urn home is approximately 11.000 DKK, and there will still be a funeral back in Scandinavia to pay for once the ashes or body arrive.

### WHO WANTS YOUR MONEY?

While nobody may want your body, everybody will want your money if you leave anything of any value behind. Children back in Scandinavia may be in for a nasty surprise. In Scandinavia, children are by law entitled to receive a minimum percentage from the estate. In Thailand, the Thai wife gets it all,



and the children receive nothing until she dies.

Relatives from back home often complain to the embassy in Bangkok and ask for help, but if there is no will, they will not inherit a single krone from their deceased parent.

The embassies also witness situations where a Thai spouse gets absolutely nothing even though she was taking care of the deceased for the past many, many years. If the couple did not register a marriage under Thai law, the estate will go in full to the children in Denmark - who do not want to share anything with the bereaved Thai spouse. Her only chance is to prove to the court that she and the deceased had joint earnings while living together.

So ask yourself, should your Thai spouse should inherit anything? If so, go and get married and register your permanent address in Thailand! Inform the authorities back home too. If you want her to be kicked out of your shared home after you are dead, then you should of course not marry her...

On the other hand, if you don't think it is fair that your Thai wife should take it all and give an F... finger to your children from your previous marriage back home, then you really should write and register a will. It is your own will and you can choose exactly who and what to include, as long as it is within the rules of the law on heritage.

To make sure your will is valid in Thailand, you should have it translated and legalized by the Thai Foreign Ministry and your Nordic Embassy in Bangkok. If the will is made in your home country, it must be translated and then likewise legalized by the Ministry of Foreign Affairs in Thailand and the Embassy of your own country in Bangkok.

## THE RIGHTS OF A RELATIVE

Further to the general rules on inheritance mentioned above, it is important to be aware that the official permanent residence address can influence the game. If the deceased is registered with a permanent residence in the Nordics, the national law of inheritance in that country will apply. If your permanent address is in Thailand, Thai rules will apply. This means that if you have assets in both countries and your permanent address is in Thailand, the combined inheritance will be distributed according to Thai rules and vice versa. Sometimes scenarios like this can be troubling to a family at home if they for instance live in a home owned by the deceased.

For the Thai spouse, the most important documents to obtain are the death certificate and the Court's Order appointing her as the heir. The documents are used to get the corpse from the hospital, money from bank accounts and to get the deceased erased from the house registration book. To be granted ownership of the inheritance in Denmark, the Thai death certificate must



be translated to English or Danish and the Danish Embassy and the Thai Ministry of Foreign Affairs have legalized it before a Danish court will accept it.

If the Nordic relatives need a copy of the death certificate, they may get in touch with the Thai Embassy in their home country. The Embassy's consular service section will be able to help process your request to obtain a copy of a death certificate. If they are in Thailand, they can contact the Consular Department, Ministry of Foreign Affairs, 123 Chaeng Wattana Road, Bangkok 11120. Tel: +66 2 575 1054.





2

9

16

23

3

10

17

24

4

11

18

25

6

12

13

19

26

**T**raditionally, the year for expats in Thailand started in September when people were “back after the summer”. The year ended in June when it was time to “go back for the summer”. Although this pattern has its roots in old colonial British times, many expats still follow roughly that year and enjoy a long summer vacation back home before coming back for a long straight period of work during autumn, winter and spring.

However, many young people employed on local contracts tend to break away from the colonial expat life cycle and follow instead the Thai year with the main vacation around Songkran in April.

The international schools follow the expat summer break rhythm, while local Thai schools follow the Thai calendar dating back to King Rama 6. According to that calendar, the new year starts on the 1st of April. So the students in a Thai school have year-end exams in March and then go on a break until the school opens again in May.

## **AUTUMN IN THAILAND**

In September, back after the summer, you can look forward to a straight ten months in Thailand. During that time, a wide variety of events are being organized and offered by the social associations and the various business associations.

One of the highlights in the autumn is the Crayfish Party organized by the Thai Nordic Association (previously the Scandinavian Society Siam), usually the last Saturday in September or the first Saturday in October.

The Swedish SWEA and the Danish DWN usually also have a “welcome back” event around that time

Norwegian Church in Pattaya keep up an impressive number of well-visited community events including of course the Sunday Christ services. The same is to a lesser extend the case for the Danish Church in Bangkok. The Church of Sweden has been closed down.

On 24 December, Christmas Eve, many Scandinavians in Bangkok join the Nordic service in Christ Church with the gospel read in all four home languages - sometimes even in Icelandic, too.

## **SPRING IN THAILAND**

Spring in Thailand can be an extremely hot season until the Songkran water festival, when the monsoon changes and we get rain and cooler winds..

The spring is also the season for all the Annual General Meetings making their selections of new members to head the different boards of directors. SWEA, TSCC and DTCC have their meetings in March, and so does the the Nordic associations in Hua Hin, SSS holding their event in late April. The Thai-Finnish Chamber of Commerce - the first of the Nordic business associations - hold their AGM in August.

Many people feel that time goes faster in Thailand than back home. That is of course nonsense, but suddenly it is indeed June again and another year has gone. Time to go “back for the summer”.

The calendar on scandasia.com gives the most comprehensive overview Nordic events. Other communities have similar online communities, where you can also subscribe to emails and join in chats. Much is also organised using the services for groups offered on Facebook.

# 2022

## July

S	M	T	W	T	F	S
					1	2
3	4	5	6	7	8	9
10	11	12	13	14	15	16
17	18	19	20	21	22	23
24	25	26	27	28	29	30
31						

13 – Asanha Bucha

14 – Buddisht Lent Day

15 – Public Holiday

28 – H.M. King's Birthday

29 – Public Holiday

## August

S	M	T	W	T	F	S
	1	2	3	4	5	6
7	8	9	10	11	12	13
14	15	16	17	18	19	20
21	22	23	24	25	26	27
28	29	30	31			

12 – H.M. Queen Mother's Birthday

## September

S	M	T	W	T	F	S
				1	2	3
4	5	6	7	8	9	10
11	12	13	14	15	16	17
18	19	20	21	22	23	24
25	26	27	28	29	30	

24 – Prince Mahidol Day

## October

S	M	T	W	T	F	S
						1
2	3	4	5	6	7	8
9	10	11	12	13	14	15
16	17	18	19	20	21	22
23	24	25	26	27	28	29
30	31					

13 – The passing of King Bhumibol

14 – Public Holiday

23 – Chulalongkorn Day (+ 24 in lieu)

24 – Chulalongkorn Day (compensation)

## November

S	M	T	W	T	F	S
		1	2	3	4	5
6	7	8	9	10	11	12
13	14	15	16	17	18	19
20	21	22	23	24	25	26
27	28	29	30			

## December

S	M	T	W	T	F	S
				1	2	3
4	5	6	7	8	9	10
11	12	13	14	15	16	17
18	19	20	21	22	23	24
25	26	27	28	29	30	31

5 – H.M. King Bhumibol's Birthday

10 – Constitution Day (+ 12 in lieu)

30 – Public Holiday

31 – New Year's Eve

# 2023

## January

S	M	T	W	T	F	S
1	2	3	4	5	6	7
8	9	10	11	12	13	14
15	16	17	18	19	20	21
22	23	24	25	26	27	28
29	30	31				

1 – New Year's Day

22 – Chinese New Year

## February

S	M	T	W	T	F	S
			1	2	3	4
5	6	7	8	9	10	11
12	13	14	15	16	17	18
19	20	21	22	23	24	25
26	27	28				

## March

S	M	T	W	T	F	S
			1	2	3	4
5	6	7	8	9	10	11
12	13	14	15	16	17	18
19	20	21	22	23	24	25
26	27	28	29	30	31	

6 – Makha Bucha Day

## April

S	M	T	W	T	F	S
						1
2	3	4	5	6	7	8
9	10	11	12	13	14	15
16	17	18	19	20	21	22
23	24	25	26	27	28	29
30						

6 – Chakri Memorial Day

13, 14, 15 – Songkran

## May

S	M	T	W	T	F	S
	1	2	3	4	5	6
7	8	9	10	11	12	13
14	15	16	17	18	19	20
21	22	23	24	25	26	27
28	29	30	31			

1 – Labor Day

4 – Coronation Day

25 – Plowing Day

## June

S	M	T	W	T	F	S
				1	2	3
4	5	6	7	8	9	10
11	12	13	14	15	16	17
18	19	20	21	22	23	24
25	26	27	28	29	30	

3 – Visakha Bucha Day

3 – Queen Suthida's Birthday (+ 5 in lieu)



# Recommended Services

## Graphic Services



Scand-Media Corp., Ltd.  
Bangkok 10230  
[www.scandmedia.com](http://www.scandmedia.com)

## Health & Dental Care



Bangkok Hospital  
Bangkok 10310  
[www.bangkokhospital.com](http://www.bangkokhospital.com)



Bangkok International Dental Hospital  
(BIDH)  
Bangkok 10110  
[www.dentalhospitalthailand.com](http://www.dentalhospitalthailand.com)

## Hotels and Resorts



akyra Thonglor Bangkok  
Bangkok 10110  
[www.theakyra.com/bangkok/thonglor/](http://www.theakyra.com/bangkok/thonglor/)



Dolphin Bay Resort  
Hua Hin 77120  
[www.dolphinbayresort.com](http://www.dolphinbayresort.com)



akyra Manor Chiang Mai Hotel  
Chiang Mai 50200  
[www.theakyra.com/chiang-mai/](http://www.theakyra.com/chiang-mai/)



Scandinavian Village  
Chonburi 20130  
[www.scandinavianvillage.net](http://www.scandinavianvillage.net)

## International Schools



Bangkok International Preparatory & Secondary School (Bangkok Prep)  
Primary Campus, Bangkok 10110  
Secondary Campus, Bangkok 10110  
[www.bangkokprep.ac.th](http://www.bangkokprep.ac.th)



**Bangkok Patana School**  
*The British International School in Thailand*  
Established 1957

Bangkok Patana School  
Bangkok 10260  
[www.patana.ac.th](http://www.patana.ac.th)



British International School, Phuket  
Phuket 83000  
[www.bisphuket.ac.th](http://www.bisphuket.ac.th)



ISB-International School Bangkok  
Nonthaburi 11120  
[www.isb.ac.th](http://www.isb.ac.th)



KING'S COLLEGE  
INTERNATIONAL SCHOOL  
BANGKOK

King's College International School  
Bangkok  
Bangkok 10120  
[www.kingsbangkok.ac.th](http://www.kingsbangkok.ac.th)



**International School**

KIS International School  
Bangkok 10310  
[www.kis.ac.th](http://www.kis.ac.th)



Regents International School Pattaya  
Chonburi 20150  
[www.regents-pattaya.co.th](http://www.regents-pattaya.co.th)



Rugby School Thailand  
Chonburi 20150  
[www.rugbyschool.ac.th](http://www.rugbyschool.ac.th)

## International Schools



Shrewsbury International School Bangkok  
Riverside, Bangkok 10120  
City Campus, Bangkok 10310  
[www.shrewsbury.ac.th](http://www.shrewsbury.ac.th)



St Andrews International School Bangkok  
- Primary School (Sukhumvit 71)  
Bangkok 10110  
[www.standrews.ac.th](http://www.standrews.ac.th)

St Andrews International School Bangkok  
- High School (Sukhumvit Rd)  
Bangkok 10110  
[www.standrews.ac.th](http://www.standrews.ac.th)



St. Andrews  
International School  
Dusit Green Valley Sathorn Sukhumvit 107  
[www.standrews-schools.com](http://www.standrews-schools.com)

St. Andrews International School,  
Dusit Bangkok 10300  
[www.standrewsdusit.com](http://www.standrewsdusit.com)

St. Andrews International School,  
Sathorn Bangkok 10500  
[www.standrewssathorn.com](http://www.standrewssathorn.com)

St. Andrews International School,  
Sukhumvit 107 Bangkok 10260  
[www.standrewssukhumvit.com](http://www.standrewssukhumvit.com)

St. Andrews International School,  
Green Valley Rayong 21130  
[www.standrewsgreenvalley.com](http://www.standrewsgreenvalley.com)

## Moving & Relocation



ASIAN TIGERS  
GROUP

Asian Tigers Group  
Bangkok 10110  
[www.asiantigersgroup.com/thailand](http://www.asiantigersgroup.com/thailand)

## News Media

**ScandAsia.com**  
NEWS FOR SCANDIANS IN ASIA

Scandinavian Publishing Co., Ltd.  
Bangkok 10230  
[www.scandasia.com](http://www.scandasia.com)

## Private Banking

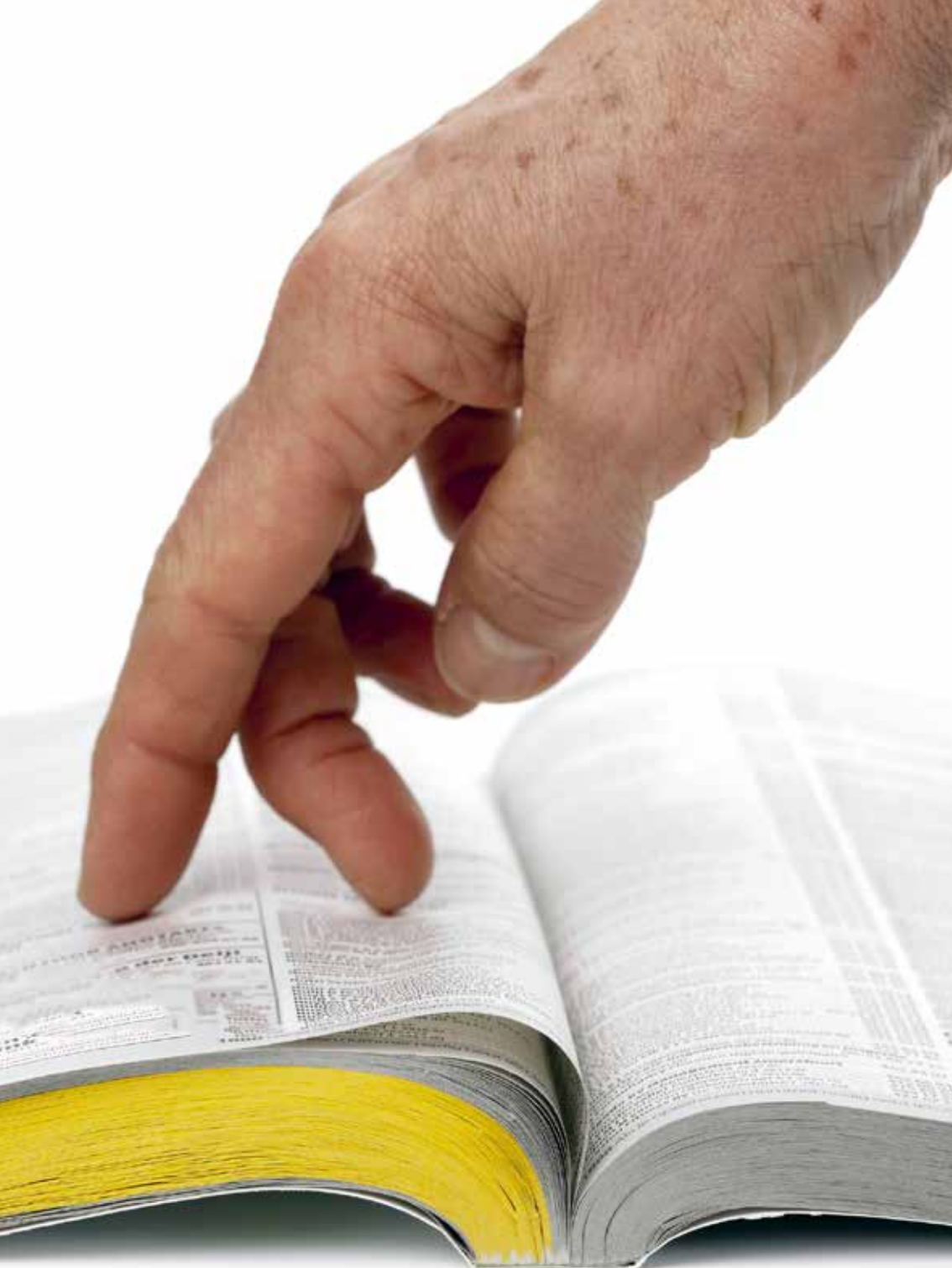


Trusted Novus Bank  
Gibraltar  
[www.trustednovusbank.gi](http://www.trustednovusbank.gi)

## Retirement Homes



Scandinavian Village  
Chonburi 20130  
[www.scandinavianvillage.net](http://www.scandinavianvillage.net)



## A directory of companies in Thailand with a Nordic affiliation

### A

Aava Resort & Spa	Nakhon Si Thammarat 80210	<a href="https://www.aavaresort.com">https://www.aavaresort.com</a>
ABB Power Grids (Thailand) Limited	Bangkok 10330	<a href="https://www.hitachiabb-powergrids.com">https://www.hitachiabb-powergrids.com</a>
AbrasiveNow Co., Ltd.	Samut Prakan 10540	<a href="https://abrasivenow.com">https://abrasivenow.com</a>
ACT Logistics Group (Thailand)	Bangkok 10110	<a href="https://www.myact247.com">https://www.myact247.com</a>
Adiantes Co., Ltd.	Bangkok 10110	<a href="https://www.adiantes.com">https://www.adiantes.com</a>
Agon Pacific Co., Ltd.	Bangkok 10110	<a href="https://www.agonpacific.com">https://www.agonpacific.com</a>
Aibel (Thailand) Ltd.	Rayong 21130	<a href="https://aibel.com">https://aibel.com</a>



akrya Thonglor Bangkok Hotel	Bangkok 10110	<a href="https://www.theakrya.com/bangkok/thonglor/">https://www.theakrya.com/bangkok/thonglor/</a>
------------------------------	---------------	---



akrya Manor Chiang Mai Hotel	Chiang Mai 50200	<a href="http://www.theakrya.com/chiang-mai/">www.theakrya.com/chiang-mai/</a>
------------------------------	------------------	--

Aleenta Company Limited	Bangkok 10230	<a href="https://aleenta.com">https://aleenta.com</a>
Alfa Laval (Thailand) Ltd.	Bangkok 10240	<a href="https://www.alfalaval.com">https://www.alfalaval.com</a>
Amata Corporation Public Co., Ltd.	Bangkok 10320	<a href="https://amata.com/eng">https://amata.com/eng</a>
Andersen Consult ApS	DK-9000 Aalborg, Denmark	<a href="https://andersenconsult.com">https://andersenconsult.com</a>
Area Digital Solution Inc	Bangkok 10110	<a href="https://www.areadigital.asia">https://www.areadigital.asia</a>
Aritco (Thailand) Co., Ltd.	Bangkok 10120	<a href="http://www.aritco.co.th/TH/home">http://www.aritco.co.th/TH/home</a>
AS Friis Ltd.	Bangkok 10110	<a href="https://www.as-friis.com">https://www.as-friis.com</a>
Asia Adviser (Thailand) Co.,Ltd	Bangkok 10600	<a href="mailto:janlund11@gmail.com">mailto:janlund11@gmail.com</a>
Asia House	Copenhagen 2100	<a href="https://www.asia-house.dk">https://www.asia-house.dk</a>
Asian Assistance (Thailand) Co., Ltd.	Bangkok 10900	<a href="https://www.asianassistance.com">https://www.asianassistance.com</a>
Asian Institute of Technology	Pathumthani 12120	<a href="https://www.ait.ac.th">https://www.ait.ac.th</a>



**ASIAN TIGERS**  
GROUP

Asian Tigers Mobility	Bangkok 10110	<a href="https://www.asiantigers-mobility.com">https://www.asiantigers-mobility.com</a>
-----------------------	---------------	---

AsiaOne International	Bangkok 10120	<a href="https://www.asiaone-thf.com">https://www.asiaone-thf.com</a>
Assa Abloy (Thailand) Ltd.	Bangkok 10250	<a href="https://www.assaabloy.com">https://www.assaabloy.com</a>
Assab Steels (Thailand) Ltd.	Samut Prakan 10540	<a href="https://www.assabth.com">https://www.assabth.com</a>
Astra Zeneca (Thailand) Ltd.	Bangkok 10120	<a href="https://www.astrazeneca.co.th">https://www.astrazeneca.co.th</a>
Atlas Copco (Thailand) Ltd.	Chacheongsao 24180	<a href="https://www.atlascopco.com">https://www.atlascopco.com</a>
Autoliv (Thailand) Ltd.	Chonburi 20000	<a href="https://www.autoliv.com">https://www.autoliv.com</a>
Axis Communications (Thailand) Ltd.	Bangkok 10110	<a href="https://www.axis.com">https://www.axis.com</a>

**B**

BK Consulting		<a href="https://bk-consulting.com">https://bk-consulting.com</a>
B.L. Hua & Co. Ltd.	Bangkok 10600	
Baan Sabajjai (Pattaya) Co., Ltd.	Nakhonphanom 48110	<a href="http://baan-sabajjai.net/">http://baan-sabajjai.net/</a>
Baker & McKenzie Ltd.	Bangkok 10500	<a href="https://www.bakermckenzie.com">https://www.bakermckenzie.com</a>
Banana Shoes Asia Co., Ltd.	Bangkok 10110	<a href="https://www.bananasshoes.com">https://www.bananasshoes.com</a>
Bang & Olufsen	Bangkok 10330	<a href="https://stores.bang-olufsen.com/en/thailand">https://stores.bang-olufsen.com/en/thailand</a>
Bangkok Bank Public Company Limited	Bangkok 10500	<a href="https://www.bangkokbank.com">https://www.bangkokbank.com</a>
Bangkok Dusit Medical Services	Bangkok 10310	<a href="https://www.bdms.co.th">https://www.bdms.co.th</a>



Bangkok Hospital Bangkok	Bangkok 10310	<a href="https://www.bangkokhospital.com">https://www.bangkokhospital.com</a>
Bangkok Hospital Hua Hin	PrachuapKhiriKhan 77110	<a href="https://www.bangkokhospital.com/huahin">https://www.bangkokhospital.com/huahin</a>
Bangkok Hospital Phuket	Phuket 83000	<a href="https://www.phukethospital.com/">https://www.phukethospital.com/</a>



Bangkok International Dental Hospital (BIDH)	Bangkok 10110	<a href="https://dentalhospitalthailand.com/">https://dentalhospitalthailand.com/</a>
--	---------------	---

Bangkok International Prep School	Bangkok 10110	<a href="https://www.bkkprep.ac.th">https://www.bkkprep.ac.th</a>
Bangkok Mold Consultant Ltd. Part	Bangkok 10160	<a href="https://www.bangkokmolds.com">https://www.bangkokmolds.com</a>
Bangkok Padel Co., Ltd.	Bangkok	<a href="https://www.bangkokpadel.com/">https://www.bangkokpadel.com/</a>



**Bangkok Patana School**  
*The British International School in Thailand*  
 Established 1957

Bangkok Patana School	Bangkok 10260	<a href="https://www.patana.ac.th">https://www.patana.ac.th</a>
Bangkok Pattaya Hospital International	Chonburi 20150	<a href="https://www.bangkokpattayahospital.com">https://www.bangkokpattayahospital.com</a>



Bangkok International Preparatory & Secondary School (Bangkok Prep)	Bangkok 10110	<a href="https://www.bangkokprep.ac.th">https://www.bangkokprep.ac.th</a>
Barefeet Naturist Resort	Bangkok 10230	<a href="https://www.barefeetnaturistresort.com">https://www.barefeetnaturistresort.com</a>
Beauty Medical (Thailand) Co., Ltd.	Bangkok 10110	<a href="http://beautymedicalthailand.com/">http://beautymedicalthailand.com/</a>
Benchachinda Holding Co., Ltd.	Bangkok 10900	<a href="https://www.benchachinda.co.th">https://www.benchachinda.co.th</a>
BillerudKorsnas	Bangkok 10110	<a href="https://www.billerudkorsnas.com">https://www.billerudkorsnas.com</a>
Biogasclean (Thailand) Ltd.	Samutprakarn 10280	<a href="https://biogasclean.com/">https://biogasclean.com/</a>
Black Mountain Golf Club Hua Hin	PrachuapKhiriKhan 77110	<a href="https://www.blackmountainhuahin.com">https://www.blackmountainhuahin.com</a>
Blue Business Solutions Limited	Bangkok 10330	<a href="https://www.blue.in.th">https://www.blue.in.th</a>
BNH Hospital	Bangkok 10500	<a href="https://www.BNHhospital.com">https://www.BNHhospital.com</a>
Boman Creative		<a href="https://www.bomancreative.com">https://www.bomancreative.com</a>
Brighton College International School	Bangkok 10240	<a href="https://www.brightoncollegebangkok.com">https://www.brightoncollegebangkok.com</a>



British International School Phuket	Phuket 83000	<a href="https://www.bisphuket.ac.th">https://www.bisphuket.ac.th</a>
BT Flindt	Phuket 83130	<a href="https://www.bt-flindt.dk">https://www.bt-flindt.dk</a>
Bumrungrad International Hospital	Bangkok 10110	<a href="https://www.bumrungrad.com">https://www.bumrungrad.com</a>
Burapha Agroforestry Co., Ltd.	Vientiane, Lao PDR	<a href="https://www.buraphawood.com">https://www.buraphawood.com</a>
Business Finland (FinPro / Tekes)	Kuala Lumpur 50450,	<a href="https://www.businessfinland.fi">https://www.businessfinland.fi</a>
Business Sweden	Bangkok 10330	<a href="https://www.business-sweden.se">https://www.business-sweden.se</a>

## C

C&C Travel SE Asia	Bangkok 10110	<a href="https://www.cctravel.co.th">https://www.cctravel.co.th</a>
Cajutan Co., Ltd.	Hua Hin 77110	<a href="https://www.cajutan.com">https://www.cajutan.com</a>
Camfil Thailand	Bangkok 10310	<a href="https://www.camfil.com">https://www.camfil.com</a>

Capaciton Ltd.	Bangkok 10250	<a href="https://www.capaciton.com">https://www.capaciton.com</a>
Car-O-Liner (Thailand) Co., Ltd.	Bangkok 10250	<a href="https://www.car-o-liner.com">https://www.car-o-liner.com</a>
Caretex Asia Ltd.	Chonburi 20230	<a href="https://www.caretex.dk">https://www.caretex.dk</a>
CCM Center for Change Management Ltd.	Bangkok 10110	<a href="https://www.ccm.co.th">https://www.ccm.co.th</a>
Centara Grand & Bangkok Convention	Bangkok 10330	<a href="https://www.centarahotelsresorts.com">https://www.centarahotelsresorts.com</a>
Centry Ltd.	Bangkok 10110	<a href="https://www.centry.global">https://www.centry.global</a>
Chilindo	Samut Prakan 10560	<a href="https://www.chilindo.com">https://www.chilindo.com</a>
Chow Energy Public Company Limited	Bangkok 10110	<a href="http://www.chowenergy.co.th/th/">http://www.chowenergy.co.th/th/</a>
Christiani and Nielsen	Bangkok 10260	<a href="https://www.cn-thai.co.th">https://www.cn-thai.co.th</a>
Church of Finland Bangkok	Bangkok	<a href="https://www.suomenkirkkothaimaassa.net">https://www.suomenkirkkothaimaassa.net</a>
Ciptor Asia	Bangkok 10110	<a href="https://www.ciptor.com">https://www.ciptor.com</a>
Clarity IT Co., Ltd.	Bangkok 10330	<a href="https://www.clarity.co.th">https://www.clarity.co.th</a>
Cloud Asset Oy Helsinki,	Finland	<a href="https://www.cloudasset.com">https://www.cloudasset.com</a>
Codemate Ltd.	Bangkok 10310	<a href="https://www.codemate.com">https://www.codemate.com</a>
Condato Asia Ltd.	Bangkok 10250	<a href="https://condatogroup.com/">https://condatogroup.com/</a>
Connecting Global Ltd.	Samut Prakan 10560	<a href="https://www.global-connection.info">https://www.global-connection.info</a>
Conrads Deli	Bangkok 10250	<a href="https://www.conradsdelishop.com">https://www.conradsdelishop.com</a>

## D

D2 Real Estate Co.,Ltd.	Rayong 21160	<a href="https://www.vipreal.info">https://www.vipreal.info</a>
Dachser (Thailand) Co., Ltd.	Bangkok 10310	<a href="https://www.dachser.co.th/th/">https://www.dachser.co.th/th/</a>
Dacon Inspection Services Co., Ltd.	Rayong 21130	<a href="https://www.dacon-inspection.com">https://www.dacon-inspection.com</a>
Dairy-Tech Thai	Pathum Thani 12000	<a href="https://www.dairy-tech.dk">https://www.dairy-tech.dk</a>
Danfoss (Thailand) Co., Ltd.	Bangkok 10320	<a href="https://www.danfoss.com">https://www.danfoss.com</a>
Danish Bakery	Bangkok 10110	<a href="https://www.danishbakery-deli.com/">https://www.danishbakery-deli.com/</a>
Danish Embassy	Bangkok 10120	<a href="https://thailand.um.dk">https://thailand.um.dk</a>
Danish Energy Management	Bangkok 10110	<a href="https://www.dem.dk">https://www.dem.dk</a>
Danish Loft Design	Bangkok 10110	<a href="https://www.danishloftdesign.com">https://www.danishloftdesign.com</a>
Danish-Thai Chamber of Commerce	Bangkok 10400	<a href="https://www.dancham.or.th">https://www.dancham.or.th</a>
Dansk Kirke Thailand	Bangkok 10400	<a href="https://www.danishchurch.in.th">https://www.danishchurch.in.th</a>
DanThai Machinery Co., Ltd.	Chonburi 20230	<a href="https://www.danThai-machinery.com">https://www.danThai-machinery.com</a>
Det Norske Veritas (Thailand) Co., Ltd.	Bangkok 10900	<a href="https://www.dnvgl.com">https://www.dnvgl.com</a>
Diab South East Asia	Samutprakarn 10540	<a href="https://www.diabgroup.com">https://www.diabgroup.com</a>
Diakrit(Thailand)Co.,Ltd.	Bangkok 10110	<a href="https://www.diakrit.com">https://www.diakrit.com</a>
Digi Electronics Ltd.		<a href="https://www.digikey.co.th/en">https://www.digikey.co.th/en</a>
DKSH (Thailand) Co. Ltd.	Bangkok 10100	<a href="https://www.dksh.com">https://www.dksh.com</a>

# DOLPHIN BAY RESORT

Dolphin Bay Resort Hua Hin 77120 <https://www.dolphinbayresort.com>

---

Double A 1991 Ltd. Co.	Chantaburi 22180	<a href="https://www.doublepaper.com">https://www.doublepaper.com</a>
DP CleanTech (Thailand) Co., Ltd.	Bangkok 10310	<a href="https://www.dpcleantech.com">https://www.dpcleantech.com</a>
DSV Air & Sea Ltd.	Bangkok 10110	<a href="https://www.th.dsv.com">https://www.th.dsv.com</a>
Dtac Bangkok		<a href="https://www.dtac.co.th">https://www.dtac.co.th</a>
Dulwich International College	Phuket 83000	<a href="https://www.dulwich-phuket.com">https://www.dulwich-phuket.com</a>
Dumex/Danone	Pakkret 11120	<a href="https://www.dumex.co.th">https://www.dumex.co.th</a>
Duni Asia Pacific	Bangkok 10330	<a href="http://www.duniterinexsiam.com/">http://www.duniterinexsiam.com/</a>
DZ Card (Thailand) Co., Ltd.	Samut Prakan 10540	<a href="https://www.dzcard.com">https://www.dzcard.com</a>

## E

EABC	Bangkok 10120	<a href="https://www.eabc-thailand.org/">https://www.eabc-thailand.org/</a>
ECCO (Thailand) Co., Ltd.	Ayuthaya 13260	<a href="https://www.ecco.com">https://www.ecco.com</a>
Eco Valley Lodge Co., Ltd.	Nakhon Ratchasima 30130	<a href="https://www.ecovalleylodge.com">https://www.ecovalleylodge.com</a>
eDNA Consulting Co Ltd	Bangkok	<a href="https://www.edna-group.com">https://www.edna-group.com</a>
Eeden Village Cha Am,	Petchburi 76120	<a href="https://www.eedenvillage.com">https://www.eedenvillage.com</a>
EGN Thailand Co., Ltd.	Bangkok 10110	<a href="https://th.egn.com/">https://th.egn.com/</a>
Eka Chemicals (Thailand) Limited	Bangkok 10110	<a href="https://www.akzonobel.com">https://www.akzonobel.com</a>
Electrolux Thailand Co., Ltd.	Bangkok 10320	<a href="https://www.electrolux.co.th">https://www.electrolux.co.th</a>
Eltek Power Co., Ltd.	Bangkok 10510	<a href="https://www.eltek.com">https://www.eltek.com</a>
Engie		<a href="https://www.engie.com">https://www.engie.com</a>
EnterGraph	Bangkok 10110	<a href="https://www.entergraph.com">https://www.entergraph.com</a>
Epiroc (Thailand) Ltd.	Bangkok 10260	<a href="https://www.epiroc.com/en-th">https://www.epiroc.com/en-th</a>
EQHO Communications Ltd.	Bangkok 10500	<a href="https://www.eqho.com">https://www.eqho.com</a>
Ericsson (Thailand) Ltd.	Bangkok 10900	<a href="https://www.ericsson.com">https://www.ericsson.com</a>
Essentia Protein Solutions	Bangkok 10110	<a href="https://essentiaproteins.com/int/">https://essentiaproteins.com/int/</a>
Essity (Thailand) Co., Ltd.	Bangkok 10900	<a href="https://www.essity.com/">https://www.essity.com/</a>
ETK EMS ASIA Productions Ltd.	Rayong 21140	<a href="https://www.etk.dk">https://www.etk.dk</a>
Euro-Center (Thailand) Co., Ltd.	Bangkok 10400	<a href="https://www.euro-center.com">https://www.euro-center.com</a>
EuropAsia	Bangkok 10500	<a href="https://www.europasia-insurance.com">https://www.europasia-insurance.com</a>
Europcar Danmark	Denmark	<a href="https://www.europcar.dk">https://www.europcar.dk</a>
Evason Huahin	PrachuapKhiriKhan 77220	<a href="http://bluelotushuahin.com/resort">bluelotushuahin.com/resort</a>
Evason Phuket & Bon Island	Phuket 83130	<a href="https://www.sixsenses.com">https://www.sixsenses.com</a>

EventBank Limited Central	Hong Kong	<a href="https://www.eventbank.com">https://www.eventbank.com</a>
Evolution Tour	Trat 23170	<a href="https://www.evolutiontour.com">https://www.evolutiontour.com</a>
Express International Travel	Bangkok 10500	<a href="https://www.expressinter.com">https://www.expressinter.com</a>
Exsilium Co., Ltd.	Bangkok 10110	<a href="https://www.exsilium.co.th">https://www.exsilium.co.th</a>

## F

Fabrinet Ltd.	Pathum Thani 12120	<a href="https://www.fabrinet.com">https://www.fabrinet.com</a>
Falck Global Assistance Limited	Bangkok 10400	<a href="https://www.group.falck.com/en/countries/thailand">https://www.group.falck.com/en/countries/thailand</a>
Faraway Yachting Co. Ltd.	Phuket 83130	<a href="https://www.far-away.net">https://www.far-away.net</a>
Fearnleys (Thailand) Ltd.	Bangkok 10330	<a href="https://www.fearnleys.no">https://www.fearnleys.no</a>
FEI - Foretagsekonomiska Institutet	Stockholm 111 83	<a href="https://www.fei.se">https://www.fei.se</a>
Felicia (Thailand) Ltd.	Bangkok 10500	<a href="https://www.feliciadesign.com">https://www.feliciadesign.com</a>
Finnair Bangkok Office	Bangkok 10500	<a href="https://www.finnair.com">https://www.finnair.com</a>
Finnish Evangelical Lutheran Mission	Bangkok 10260	<a href="https://www.felm.org">https://www.felm.org</a>
Finpro Å– Finland Trade Center in Thailand & Myanmar		<a href="https://www.finpro.fi">https://www.finpro.fi</a>
Fiskars Thailand Co., Ltd.	Bangkok 10330	<a href="https://www.fiskarsgroup.com">https://www.fiskarsgroup.com</a>
Fitness24Seven	Bangkok 10110	<a href="https://www.fitness24seven-thailand.com">https://www.fitness24seven-thailand.com</a>
Flow Cocktail Ltd.	Bangkok 10330	<a href="https://www.flowcocktail.com">https://www.flowcocktail.com</a>
FLSmidth	Bangkok 10110	<a href="https://www.flsmidth.com">https://www.flsmidth.com</a>
Flux International Ltd.	Samut Prakan 10540	<a href="https://www.flux-int.com">https://www.flux-int.com</a>
Fortum Energy Solutions (T) Co., Ltd.	Bangkok 10110	<a href="https://www.fortum.com/">https://www.fortum.com/</a>
Foster Wheeler Service (thailand) Ltd.	Bangkok 10330	<a href="https://www.fwc.com">https://www.fwc.com</a>
FP Production Ltd.	Copenhagen 2100	<a href="https://www.frits.dk">https://www.frits.dk</a>
Freightzen Logistics	Bangkok 10110	<a href="https://www.freightzenlogistics.com">https://www.freightzenlogistics.com</a>
Frummerin Consulting Co., Ltd.	Bangkok 10110	
Fyn Bakery	Bangkok 10110	<a href="http://fyn-bakery.business.site">fyn-bakery.business.site</a>

## G

G4S Security Services(Thailand) Limited	Bangkok 10310	<a href="https://www.g4s.com/en-th">https://www.g4s.com/en-th</a>
Gecko do It Co., Ltd	Bangkok 10110	<a href="https://www.geckodoit.com">https://www.geckodoit.com</a>
Georg Jensen (Thailand) Ltd.	Chiangmai 50130	<a href="https://www.georgjensen.co.th">https://www.georgjensen.co.th</a>
GIF Thai Match Co., Ltd.	Samut Prakan 10280	<a href="https://www.gifthaimatch.co.th">https://www.gifthaimatch.co.th</a>
Go Beyond Asia	Bangkok 10500	<a href="http://gobeyond.asia/">gobeyond.asia/</a>
GPV Asia (Thailand) Co., Ltd.	Samut Prakan 10280	<a href="https://www.gpv-group.com">https://www.gpv-group.com</a>
GreenDot International Co., Ltd.	Ayuthaya 13000	<a href="https://www.greendotgroup.com">https://www.greendotgroup.com</a>
Grundfos (Thailand) Limited	Bangkok 10250	<a href="https://www.grundfos.co.th">https://www.grundfos.co.th</a>
Gulf Agency Company (Thailand) Ltd.	Bangkok 10330	<a href="https://www.gac.com/thailand">https://www.gac.com/thailand</a>
Gunnebo Singapore Pte Ltd	Bangkok 10110	<a href="https://www.gunnebo.com">https://www.gunnebo.com</a>

## H

Hako Group East Asia Ltd	Bangkok	<a href="https://www.hako.com">https://www.hako.com</a>
Halmstad University Sweden		<a href="https://www.hh.se/en-US/5.html">https://www.hh.se/en-US/5.html</a>
Hammars Enterprise Co., Ltd.	Bangkok 10240	<a href="https://www.hammarsenterprise.com">https://www.hammarsenterprise.com</a>
Hans Lankari company limited	Chonburi 20150	<a href="https://www.hanslankari.com">https://www.hanslankari.com</a>
Harrow International School	Bangkok 10210	<a href="https://www.harrowschool.ac.th">https://www.harrowschool.ac.th</a>
Hasle Refractories (Thailand) Co., Ltd.	Bangkok 10500	<a href="https://www.hasle-refractories.dk">https://www.hasle-refractories.dk</a>
HEI Schools Bangkok	Bangkok 10110	<a href="https://www.heibangkok.com/">https://www.heibangkok.com/</a>
Herbalife Group	Bangkok 10330	<a href="https://www.herbalife.co.th">https://www.herbalife.co.th</a>
Holm Machinery Asia Company, Ltd.	Udon Thani 41000	<a href="https://www.holmasia.com">https://www.holmasia.com</a>
HortiQ Thailand Co., Ltd	Nakhon Ratchasima 30130	<a href="https://www.feldborg.com">https://www.feldborg.com</a>
Hot Property Hua Hin	PrachuapKhiriKhan 77110	<a href="https://www.hotpropertyhuahin.com">https://www.hotpropertyhuahin.com</a>
Hotel Mermaid Bangkok Ltd.	Bangkok 10110	<a href="https://www.hotelmermaidbangkok.com">https://www.hotelmermaidbangkok.com</a>
Hove D.K. Co., Ltd.	Samut Prakan 10270	<a href="https://www.hovedk.com">https://www.hovedk.com</a>
HubLearn Thailand	Bangkok 10120	<a href="https://www.hublearn.com">https://www.hublearn.com</a>
Huhtamaki Limited	Samutsakorn 74000	<a href="https://www.huhtamaki.com">https://www.huhtamaki.com</a>
Hvidsten Group	Bangkok 10330	<a href="https://www.hvidsten.com">https://www.hvidsten.com</a>
Hygeia Healthcare Co., Ltd.	Bangkok 10700	<a href="https://www.destinationbeauty.com">https://www.destinationbeauty.com</a>

## I

I-Tracking (Thailand) Co., Ltd.	Bangkok 10260	<a href="https://www.itracking.asia">https://www.itracking.asia</a>
Ib Andresen Industry (Thailand) Co., Ltd.	Chonburi 20230	<a href="https://www.iai.co.th">https://www.iai.co.th</a>
IGLU	Chiang Mai 50100	<a href="https://www.iglu.net">https://www.iglu.net</a>
IIB (Thailand) Co., Ltd.	Bangkok 10110	<a href="https://www.iib-thailand.com">https://www.iib-thailand.com</a>
IKEA Purchasing Services (Thailand) Ltd.	Samutprakarn 10540	<a href="https://www.ikea.com">https://www.ikea.com</a>
IKEA Trading (Thailand) Ltd.	Bangkok 10110	<a href="https://www.ikea.com/">https://www.ikea.com/</a>
IMG Asia Co., Ltd.	Chachoengsao 24140	<a href="https://www.imgcomfort.com">https://www.imgcomfort.com</a>
Indochina Explorers Travel	Bangkok 10500	<a href="https://www.indochinaexplorers.com">https://www.indochinaexplorers.com</a>
Indorama Ventures Global Services Limited		<a href="https://www.indorama.net">https://www.indorama.net</a>
Innovation Norway	Bangkok 10110	<a href="https://www.innovasjon norge.no">https://www.innovasjon norge.no</a>
International School of The Regents (ISR)	Chonburi 20150	<a href="https://www.regents.ac.th">https://www.regents.ac.th</a>
invadeIT Co., Ltd.	PrachuapKhiriKhan 77110	<a href="https://www.invadeit.co.th">https://www.invadeit.co.th</a>
IQ Technologies	Bangkok 10250	<a href="http://www.iqtechasia.co.th">http://www.iqtechasia.co.th</a>



ISB - International School Bangkok      Nonthaburi 11120      <https://www.isb.ac.th>

ISS Facility Services Co., Ltd.      Bangkok 10220      <https://www.th.issworld.com>

## J

Jailhouse Restaurant, Bar & Guesthouse      PrachuapKhiriKhan 77110      <https://www.facebook.com/luahinjailhouse/>

Jebsen & Jessen      Bangkok 10110      <https://www.jjsea.com>

Jebsen & Jessen Marketing (T) Ltd.      Bangkok 10110      <https://www.marketing.jjsea.com>

Jomtien Boathouse      Chonburi 20260      <https://www.jomtien-boathouse.com>

Jonkoping University      SE-551 11 J?nk?ping      <https://www.jth.hj.se>

Jotun Powder Coatings Thailand Ltd.      Chonburi 20000      <https://www.jotun.com/ap>

Jotun Thailand Limited      Chonburi 20000      <https://www.jotun.com>

## K

K-2 Management      Bangkok 10330      <https://www.k2management.com>

Kamthorn Surachet & Somsak Ltd.      Bangkok 10600      <https://www.kss.co.th>

Kare's Party Bar      Chonburi 20150      <https://www.kaarethai.com>

Kauko International Oy Finland      <https://www.kaukointernational.com>

Kemira (Thailand) Co., Ltd.      Bangkok 10110      <https://www.kemira.com/en/>

Kiin Kiin (Sra Bua Restaurant)      Bangkok 10330      <https://www.srabuabykiinkiin.com/en>



KING'S COLLEGE  
INTERNATIONAL SCHOOL  
BANGKOK

King's College International School Bangkok      Bangkok 10120      <https://www.kingsbangkok.ac.th>



International School

KIS International School      Bangkok 10310      [www.kis.ac.th](http://www.kis.ac.th)

KlarAcc Company Limited      Bangkok 10110      <https://klaracc.com/>

Kohsel (Thailand) Co., Ltd.      Ratchaburi 70110      <https://kohsel.dk/>

Kon-Tiki Khao Lak Co.,Ltd	Phang Nga 82190	<a href="https://www.kontiki-thailand.com">https://www.kontiki-thailand.com</a>
Kon-Tiki Krabi Co., Ltd.	Krabi 81000	<a href="https://www.kontiki-thailand.com">https://www.kontiki-thailand.com</a>
Kon-Tiki Phuket Co., Ltd.	Phuket 83150	<a href="https://www.kontiki-thailand.com">https://www.kontiki-thailand.com</a>
KONE Public Company Limited	Bangkok 10900	<a href="https://www.kone.com">https://www.kone.com</a>
Konecranes Service Co., Ltd.	Chonburi 20230	<a href="https://www.konecranes.com">https://www.konecranes.com</a>
Krabi Spezialisten Co., Ltd.	Krabi 81000	<a href="https://www.krabi-spezialisten.com">https://www.krabi-spezialisten.com</a>
Krusell (Thailand) Co., Ltd.	Bangkok 10600	<a href="https://www.krusell.co.th">https://www.krusell.co.th</a>
KTH - Royal Institute of Technology	SE-100 44 Stockholm	<a href="https://www.KTH.se/int">https://www.KTH.se/int</a>
Kvik Asia Co., Ltd.	Bangkok	<a href="https://www.kvik.co.th">https://www.kvik.co.th</a>

## L

L.V. Technology Public Company Limited	Bangkok 10310	<a href="https://www.lv-technology.com">https://www.lv-technology.com</a>
Lancaster Bangkok	Bangkok 10310	<a href="https://lancasterbangkok.com/">https://lancasterbangkok.com/</a>
Latitude 1 Maritime	Phuket 83000	<a href="http://www.latitude1maritime.com/">http://www.latitude1maritime.com/</a>
LawPlus Ltd.	Bangkok 10500	<a href="https://www.lawplusltd.com">https://www.lawplusltd.com</a>
LawtonAsia Insurance Brokers Co., Ltd.	Bangkok 10330	<a href="https://www.lawtonasia.com">https://www.lawtonasia.com</a>
Lighthouse Navigation Co. Ltd.	Bangkok 10330	<a href="https://www.lighthousenavigation.com">https://www.lighthousenavigation.com</a>
Linak APAC Ltd.	Chonburi 20110	<a href="http://www.linak.co.th">http://www.linak.co.th</a>
Logonet (Thailand) Co., LTD	Bangkok 10230	<a href="https://www.logonet.com">https://www.logonet.com</a>
Lomamaa Co., Ltd.	Bangkok 10150	<a href="https://www.eedenvillage.com">https://www.eedenvillage.com</a>
Lorenz & Partners Co., Ltd.	Bangkok 10120	<a href="https://lorenz-partners.com/">https://lorenz-partners.com/</a>
Lotus Star Co.,Ltd.	Bangkok 10110	<a href="https://www.lotus-star.com">https://www.lotus-star.com</a>
Lux Royal (Thailand) Co., Ltd.	Bangkok 10110	<a href="https://www.lux.co.th">https://www.lux.co.th</a>
Lykke Studios		<a href="https://www.lykkestudios.com">https://www.lykkestudios.com</a>

## M

M.I.A.C Automation Co., Ltd.	Chonburi 20150	<a href="https://www.miac-automation.com">https://www.miac-automation.com</a>
M2 Animation	Bangkok 10110	<a href="https://www.m2animation.com">https://www.m2animation.com</a>
Maersk Line (Thailand) Ltd.	Bangkok 10120	<a href="https://www.maerskline.com">https://www.maerskline.com</a>
Maersk Logistics	Bangkok 10120	<a href="https://www.maersk.com">https://www.maersk.com</a>
Magic Years International School	Nonthaburi 11120	<a href="https://www.magicyears.ac.th">https://www.magicyears.ac.th</a>
Martin Bencher (Thailand) Co. Ltd.	Bangkok 10110	<a href="https://www.martin-bencher.com/thailand-bangkok/">https://www.martin-bencher.com/thailand-bangkok/</a>
Maxxi Building Product Co., Ltd	PrachuapKhiriKhan 77110	<a href="https://www.maxxi.co.th">https://www.maxxi.co.th</a>
Mconzult Asia Co., Ltd.	Bangkok 10210	<a href="https://www.mconzult.com">https://www.mconzult.com</a>
Media Partner Co., Ltd.	Bangkok 10230	
Mermaid Safety Services Ltd.	Cholburi 20230	<a href="https://www.mermaid-safety.com">https://www.mermaid-safety.com</a>
Mermaids Dive Center	Chonburi 20260	<a href="https://www.mermaiddive.com">https://www.mermaiddive.com</a>
Metso Automation Co., Ltd.	Bangkok 10110	<a href="https://www.metso.com/automation">https://www.metso.com/automation</a>

MetsoPaper (Thailand) Co., Ltd.	Chonburi 20230	<a href="https://www.metso.com">https://www.metso.com</a>
Michael Page International Recruitment	Bangkok 10110	<a href="https://www.michaelpage.co.th">https://www.michaelpage.co.th</a>
Mikkeller Bangkok	Bangkok 10110	<a href="https://www.mikkellerbangkok.com">https://www.mikkellerbangkok.com</a>
Min Sen Machinery Co.,Ltd.	Bangkok 10200	<a href="https://www.minsen.co.th">https://www.minsen.co.th</a>
Minor Hotel	Bangkok	<a href="https://www.minorhotels.com">https://www.minorhotels.com</a>
Modern International School Bangkok	Bangkok 10110	<a href="https://www.misb.ac.th">https://www.misb.ac.th</a>
Modern Montessori International Thailand	Bangkok 10110	<a href="https://www.mmithailand.com">https://www.mmithailand.com</a>
Modigs Forvaltnings (Asia) Limited	Bangkok 10110	
Moevenpick Resort and Spa	Phuket 83100	<a href="https://www.moevenpick-hotels.com">https://www.moevenpick-hotels.com</a>
Molnlycke Heath Care (Thailand)	Samut Prakan 10540	<a href="https://www.molnlycke.com">https://www.molnlycke.com</a>
Move Marketing Co.Ltd.		<a href="https://www.move-marketing.dk">https://www.move-marketing.dk</a>
Munkfors Swedev Asia Co., Ltd.	Bangkok 10400	<a href="https://www.munkfors.com">https://www.munkfors.com</a>
Munters (Thailand) Co., Ltd.	Bangkok 10400	<a href="https://www.munters.com/en/contact/thailand/">https://www.munters.com/en/contact/thailand/</a>
My Internship Asia	Bangkok 10330	<a href="https://www.myinternshipasia.com">https://www.myinternshipasia.com</a>

## N

Naviworld (Thailand) Co., Ltd.	Chonburi 20110	<a href="https://www.naviworld-asia.com">https://www.naviworld-asia.com</a>
Nera (Thailand) Limited	Bangkok 10110	<a href="https://www.neratel.com.sg">https://www.neratel.com.sg</a>
Net Protection Concepts	Bangkok 10400	<a href="https://www.npc-international.net">https://www.npc-international.net</a>
Niifisk-Advance Co., Ltd.	Bangkok 10900	<a href="https://www.niifisk.co.th">https://www.niifisk.co.th</a>
NishaVille	PrachuapKhiriKhan	<a href="https://www.nishaville.com">https://www.nishaville.com</a>
NIST International School	Bangkok 10110	<a href="https://www.nist.ac.th">https://www.nist.ac.th</a>
Nokia (Thailand) Ltd.	Bangkok 10400	<a href="https://www.nokia.com/">https://www.nokia.com/</a>
Nokia Telecommunications (Thailand) Ltd.	Bangkok 10400	<a href="https://www.nokia.com/th-th">https://www.nokia.com/th-th</a>
NorCiv Engineering Co., Ltd.	Bangkok 10400	<a href="https://www.norconsult.co.th">https://www.norconsult.co.th</a>
Nordic Plastic (Thailand) Co., Ltd.	Rayong 21140	<a href="https://www.nordicplastic.com">https://www.nordicplastic.com</a>
Nordic Power Asia Ltd.	Bangkok 10110	<a href="https://www.nordicpower.co.th">https://www.nordicpower.co.th</a>
Norsk Sjomannskirke i Thailand	Chonburi 20260	<a href="https://www.sjomannskirken.no">https://www.sjomannskirken.no</a>
Norske Skog (Thailand) Co., Ltd.	Bangkok 10110	<a href="https://www.norskeskog.com">https://www.norskeskog.com</a>
Norwegian Peoples Aid	Bangkok 10520	<a href="https://www.npaid.org">https://www.npaid.org</a>
Norwegian Properties Group	Chonburi 20150	<a href="https://www.vnresidences.com">https://www.vnresidences.com</a>
Noventa (Thailand) Co., Ltd.	Samutprakarn 10540	<a href="https://www.noventa.com/en">https://www.noventa.com/en</a>
Novo Nordisk Pharma (Thailand)	Bangkok 10500	<a href="https://www.novonordisk.com">https://www.novonordisk.com</a>
NPT Nordic Plastic (Thailand) Co., Ltd.	Rayong 21140	<a href="https://www.nordicplastic.com">https://www.nordicplastic.com</a>

## O

Oakwood Residence	Bangkok 10110	<a href="https://www.oakwoodasia.com">https://www.oakwoodasia.com</a>
Oceanic Divecenter	Phuket 83100	<a href="https://www.oceanicdivecenter.com">https://www.oceanicdivecenter.com</a>
OK Wood Product Co., Ltd.	Bangkok	<a href="https://www.okwood.com/home.html">https://www.okwood.com/home.html</a>
Oriental Hotel, Bangkok	Bangkok 10500	<a href="https://www.mandarinoriental.com/bangkok">https://www.mandarinoriental.com/bangkok</a>
Oriental Invest	PrachuapKhiriKhan 77110	<a href="https://www.orientalinvest.com">https://www.orientalinvest.com</a>
Oriental Residence Bangkok	Bangkok 10300	<a href="https://www.oriental-residence.com">https://www.oriental-residence.com</a>
Oriflame Cosmetics (Thailand) Ltd.	Bangkok 10310	<a href="https://www.oriflame.com">https://www.oriflame.com</a>
Oriflame Management Asia Ltd.	Bangkok 10250	

## P

P.K. Snowbird Ltd	Nonthaburi 11120	<a href="https://www.pksnowbird.com/">https://www.pksnowbird.com/</a>
Pacific 2000 Recruitment Co. Ltd.	Bangkok 10330	<a href="https://www.pacific2000.com">https://www.pacific2000.com</a>
Pacific Orientation Relocation	Bangkok 10110	<a href="https://www.pacificorientation.com">https://www.pacificorientation.com</a>
Pacific Rim Rich Group Co., Ltd.	Bangkok 10230	<a href="https://www.prichgroup.com">https://www.prichgroup.com</a>
Pacific Thai Motorsports Co.,Ltd.	Bangkok 10250	<a href="https://www.wearnesauto.com">https://www.wearnesauto.com</a>
Padiworada Group Co., Ltd.	Pathum Thani 12120	
Pandora Production Co., Ltd.	Bangkok 10250	<a href="https://www.pandoragroup.com">https://www.pandoragroup.com</a>
Paradox Trading Co.,Ltd	Bangkok 10400	<a href="https://www.paradoxtrading.dk">https://www.paradoxtrading.dk</a>
Pattaya Self Storage Co.Ltd	Chonburi 20261	<a href="https://www.pattayaselvestorage.co.th">https://www.pattayaselvestorage.co.th</a>
PCE Travel Consultants	Bangkok 10110	<a href="https://www.pctravel.com">https://www.pctravel.com</a>
Pecunia Asset Management Co., Ltd	Bangkok 10110	<a href="https://www.pecunia-am.com">https://www.pecunia-am.com</a>
Peter's Coffee Co., Ltd.	Bangkok 10330	<a href="https://www.peterscoffee.com">https://www.peterscoffee.com</a>
Pharma Nord S.E.A. Co.,Ltd.	Bangkok 10260	<a href="https://www.pharmanordsea.co.th">https://www.pharmanordsea.co.th</a>
Phuket Boat Lagoon	Phuket 83200	<a href="https://www.phuketboatlagoon.com">https://www.phuketboatlagoon.com</a>
Phuket International Hospital	Phuket 83000	<a href="https://www.phuketinternationalhospital.com">https://www.phuketinternationalhospital.com</a>
Power Flow Consulting Limited	Khon Kaen 40000	<a href="https://www.powerflow.se">https://www.powerflow.se</a>
Poyry Energy Ltd.	Bangkok 10400	<a href="https://www.poyry.com">https://www.poyry.com</a>
Praesidio Group	Bangkok	<a href="https://www.praesidiogroup.com">https://www.praesidiogroup.com</a>
Presmann (Thailand) Co., Ltd.	Nonthaburi 11120	<a href="https://www.presmann.co.th">https://www.presmann.co.th</a>
Price Sanond Prabhas and Wynne	Bangkok 10120	<a href="https://www.pricesanond.com">https://www.pricesanond.com</a>
Property Care Servicer (Thailand) Ltd.	Bangkok 10120	<a href="https://www.pcs.co.th">https://www.pcs.co.th</a>
Protech Engineering and Design Co., Ltd.	Bangkok 10110	<a href="https://www.protehead.com">https://www.protehead.com</a>
Pulmentum Co., Ltd.	Bangkok 10110	<a href="https://www.pulmentum.com">https://www.pulmentum.com</a>
Pulp & Paper Technology		<a href="https://www.pulpandpaper-technology.com">https://www.pulpandpaper-technology.com</a>
PYN Asia Research Ltd.	Bangkok 10110	<a href="https://www.pyn.fi">https://www.pyn.fi</a>

**Q**

Qiva Media Ltd. Bangkok 10110 <https://www.qivamedia.com/>

**R**

Raflatac (thailand) Co., Ltd. Bangkok 10500 <https://www.upmraflatac.com>

Raindrop Foundation Bangkok 10240 <https://www.facebook.com/danskeraindropfriends/>

Rapala VMC (Thailand) Co., Ltd. Nontaburi 11110 <https://www.rapalathailand.com>

Rapid Asia Co Ltd Bangkok 10110 <https://www.rapid-asia.com>

Raya Divers Co., Ltd. Phuket 83130 <https://www.rayadivers.com>

Raya Divers Lanta Co., Ltd. Krabi 81150 <https://www.rayadivers.com/site/koh-lanta-2>

Raya Divers Phang Nga Co., Ltd Phang Nga 82190 <https://www.rayadivers.com>

Rayong Consulting (Thailand) co. Ltd Rayong 21000 <https://rayongconsulting.com/>

Rayong Specialisten Rayong 21000 <https://www.rayongspecialisten.dk>

Rec2Tec Co. Ltd. Phuket 83150 <https://rec2tec.biz/>

Regents International School Pattaya Chonburi 20150 <https://www.nordangliaeducation.com/our-schools/pattaya>



**REGENTS INTERNATIONAL SCHOOL  
PATTAYA**  
A NORD ANGLIA EDUCATION SCHOOL

Regents International School Pattaya Chonburi 20150 [www.regents-pattaya.co.th](http://www.regents-pattaya.co.th)

Regus Management (Thailand) Co., Ltd. <https://www.regus.com/en-gb>

Rembrandt Hotel & Suites Bangkok Bangkok 10110 <https://www.rembrandtbkk.com/>

Robit Plc Bangkok 10110 <https://www.robif.fi>

Rockwool (Thailand) Co., Limited Bangkok, 10240 <https://www.rockwoolasia.com>

Roedl & Partner Ltd. Bangkok 10120 <https://www.roedl.com>

Rohlig Thailand Co., Ltd. Bangkok <https://www.rohlig.com>

Royal Copenhagen Ltd. Saraburi 18140 <https://www.royalcopenhagen.com>

Royal Danish Embassy Bangkok <https://Bangkok.um.dk>

Royal Norwegian Embassy Bangkok 10501 <https://www.norway.no/en/thailand>

Royal Scandinavia Chiangmai 50130 <https://www.georgjensen.com>



**RUGBY SCHOOL  
THAILAND**

Rugby School Thailand Chonburi 20150 <https://rugbyschool.ac.th>

RunTime Co., Ltd. Bangkok 10110 <https://www.runtimeasia.com>

## S

Saab Asia Pacific Co. Ltd	Bangkok 10110	<a href="https://www.saabgroup.com">https://www.saabgroup.com</a>
Salary Hero	Bangkok 10500	<a href="https://www.salary-hero.com/">https://www.salary-hero.com/</a>
Sandvik Thailand Ltd.	Bangkok 10310	<a href="https://www.sandvik.com/s">https://www.sandvik.com/s</a>
Santa Fe Relocation Services	Bangkok 10110	<a href="https://www.santaferelo.com">https://www.santaferelo.com</a>
Sanuk - Svenska Skolan Thailand	Thailand	<a href="https://www.svenskaskolanthailand.se">https://www.svenskaskolanthailand.se</a>
Satel	Nonthaburi 11120	<a href="https://www.satel.com">https://www.satel.com</a>
SCA Hygiene Products Ltd (Thailand)	Sathorn 10120	<a href="https://www.sca.com">https://www.sca.com</a>
Scan Global Logistics Co.,Ltd.	Bangkok 10500	<a href="https://www.scangl.com">https://www.scangl.com</a>


**SCAND**MEDIA

Scand-Media Corp., Ltd.	Bangkok 10230	<a href="https://www.scandmedia.com">https://www.scandmedia.com</a>
-------------------------	---------------	---

Scandinavian Divers Co., Ltd	Phuket 83130	<a href="https://www.scandinavian-divers.com">https://www.scandinavian-divers.com</a>
Scandinavian Expats Club Pattaya	Jomtien 20260	<a href="https://www.vikingpattaya.com/">https://www.vikingpattaya.com/</a>
Scandinavian Law Office Co., Ltd.	Chonburi 20150	<a href="https://www.thailawoffice.com">https://www.thailawoffice.com</a>

**ScandAsia.com**  
 NEWS FOR SCANDIANS IN ASIA

Scandinavian Publishing Co.,Ltd.	Bangkok 10230	<a href="https://www.scandasia.com">https://www.scandasia.com</a>
----------------------------------	---------------	---

Scandinavian Society Siam	Bangkok 10110	<a href="https://www.sss.or.th">https://www.sss.or.th</a>
---------------------------	---------------	---



Scandinavian Village	Chonburi 20130	<a href="https://www.scandinavianvillage.net">https://www.scandinavianvillage.net</a>
----------------------	----------------	---

Scania Siam Co., Ltd.	Samut Prakan 10540	<a href="https://www.scania.co.th">https://www.scania.co.th</a>
Scania Siam Inc.		<a href="https://www.scania.com">https://www.scania.com</a>
Scanpro (Thailand) Co., Ltd.	Pathum Thani 12000	<a href="http://www.scanpro.net/">http://www.scanpro.net/</a>
Scanproducts Co., Ltd.	Bangkok 10110	<a href="https://www.scanproducts.co.th">https://www.scanproducts.co.th</a>
SD&V Oriental International	Bangkok 10320	<a href="https://www.sdvoriental.com">https://www.sdvoriental.com</a>
SEB - Skandinaviska Enskilda Banken AB	Singapore	<a href="https://www.sebgroup.com/">https://www.sebgroup.com/</a>
SECO Tools (Thailand) Co., Ltd.	Bangkok 10260	<a href="https://www.secotools.com">https://www.secotools.com</a>
Securitas Security Services Thailand	Bangkok 10260	<a href="https://www.securitas.com">https://www.securitas.com</a>
Sedana Medical AB	Bangkok	<a href="https://sedanamedical.com/">https://sedanamedical.com/</a>
Sedex Asia Co., Ltd.	Bangkok 10220	<a href="https://www.sedex.com">https://www.sedex.com</a>

Shaw Group Co., Ltd.	Bangkok 10250	<a href="https://www.shawgroup-th.com">https://www.shawgroup-th.com</a>
Sherwin-Williams (Thailand) Co., Ltd	Chonburi 20160	<a href="https://www.sherwin-williams.com">https://www.sherwin-williams.com</a>



Shrewsbury International School Bangkok, Riverside,	Bangkok, 10210	<a href="http://www.shrewsbury.ac.th">www.shrewsbury.ac.th</a>
Shrewsbury International School Bangkok, City Campus,	Bangkok, 10310	<a href="http://www.shrewsbury.ac.th">www.shrewsbury.ac.th</a>

Siac Consulting Co Ltd	Bangkok 10110	<a href="https://siacthai.com/da/">https://siacthai.com/da/</a>
Siam Industrial Corp., Ltd.	Bangkok 10110	<a href="https://www.siamind.co.th">https://www.siamind.co.th</a>
Siam Map Company Ltd.	Surat Thani	<a href="https://www.siammap.com">https://www.siammap.com</a>
Siam Shoreside Services Co., Ltd	Bangkok 10520	<a href="https://www.siamshoresideservices.com">https://www.siamshoresideservices.com</a>
Signode Systems, Thailand	Rayong 21140	<a href="https://signode.com/en-US/Locations?">https://signode.com/en-US/Locations?</a>
Skanem Bangkok Co., Ltd.	Chonburi 20160	<a href="https://www.skanem.com">https://www.skanem.com</a>
SKF Thailand Ltd	Bangkok 10120	<a href="https://www.skf.com">https://www.skf.com</a>
Skov Asia Ltd.	Bangkok 10310	<a href="https://www.skov.com">https://www.skov.com</a>
Spica Co., Ltd.	Bangkok 10250	<a href="https://www.spica-siam.com">https://www.spica-siam.com</a>
Sra Bua by Kiin Kiin	Bangkok 10330	<a href="https://www.kempinski.com/en/bangkok/siam-hotel/">https://www.kempinski.com/en/bangkok/siam-hotel/</a>



St Andrews International School Bangkok - Primary School (Sukhumvit 71)	Bangkok 10110	<a href="http://www.standrews.ac.th">www.standrews.ac.th</a>
St Andrews International School Bangkok - High School (Sukhumvit Rd)	Bangkok 10110	<a href="http://www.standrews.ac.th">www.standrews.ac.th</a>



St. Andrews International School, Dusit	Bangkok 10300	<a href="http://www.standrewsdusit.com">www.standrewsdusit.com</a>
St. Andrews International School, Sathorn	Bangkok 10500	<a href="http://www.standrewssathorn.com">www.standrewssathorn.com</a>
St. Andrews International School, Sukhumvit 107	Bangkok 10260	<a href="http://www.standrewssukhumvit.com">www.standrewssukhumvit.com</a>
St. Andrews International School, Green Valley	Rayong 21130	<a href="http://www.standrewsgreenvalley.com">www.standrewsgreenvalley.com</a>

St. Stephens International School	Bangkok 10900	<a href="https://www.sis.edu/">https://www.sis.edu/</a>
Stable Lodge Co., Ltd.	Bangkok 10110	<a href="https://www.stablelodge.com">https://www.stablelodge.com</a>
Starboard Co., Ltd	Samut Prakan 10540	<a href="https://www.star-board.com">https://www.star-board.com</a>
StoreGuard Co., Ltd	Phuket 83150	<a href="https://www.mystorageasia.com">https://www.mystorageasia.com</a>

SVI Public Company Limited	Pathum Thani 12000	<a href="https://svi-hq.com">https://svi-hq.com</a>
Swedish Trade Council Thailand	Bangkok 10330	<a href="https://www.swedishtrade.se">https://www.swedishtrade.se</a>
<b>T</b>		
T. D. Dairy Foods Company Limited	Lopburi 15140	<a href="https://www.td-dairyfoods.com">https://www.td-dairyfoods.com</a>
Team Precision Public Company Limited	Pathum Thani 12110	<a href="https://www.teampcba.com">https://www.teampcba.com</a>
Telenor Asia (ROH) Limited	Bangkok 10110	<a href="https://www.telenor.com">https://www.telenor.com</a>
Tellus Systems Limited	Bangkok 10320	<a href="https://www.tellus.co.th">https://www.tellus.co.th</a>
Tetra Pak (Thai) Ltd.	Bangkok 10260	<a href="https://www.tetrapak.com">https://www.tetrapak.com</a>
Thai Airways International PLC	Bangkok 10900	<a href="https://www.thairways.co.th">https://www.thairways.co.th</a>
Thai Biogas Energy Company Limited	Bangkok 10330	<a href="https://www.tbec.co.th">https://www.tbec.co.th</a>
Thai Nordic Association	Bangkok 10110	<a href="https://tna.or.th">https://tna.or.th</a>
Thai Scandinavian Law Office	Chonburi 20150	<a href="https://www.thailawoffice.com">https://www.thailawoffice.com</a>
Thai-Fin Engineering and Consulting Co., Ltd.	Ratchasima, 30001	<a href="https://www.thai-fin.com">https://www.thai-fin.com</a>
Thai-Finnish Chamber Of Commerce	Nonthaburi 11120	<a href="https://www.thaifin.or.th">https://www.thaifin.or.th</a>
Thai-Norwegian Chamber of Commerce	Bangkok 10330	<a href="https://www.norcham.com">https://www.norcham.com</a>
Thai-Scandic Steel Co., Ltd.	Rayong 21150	<a href="https://www.thaiscandic.com">https://www.thaiscandic.com</a>
Thai-Swedish Chamber of Commerce	Bangkok 10400	<a href="https://www.swecham.com">https://www.swecham.com</a>
Thaihem	Rayong 21190	<a href="https://www.thaihem.se">https://www.thaihem.se</a>
Thaivivat Insurance PCL	Bangkok 10400	<a href="https://www.thaivivat.co.th">https://www.thaivivat.co.th</a>
Thavibu Gallery	Bangkok 10500	<a href="https://www.thavibu.com">https://www.thavibu.com</a>
The American School of Bangkok	Samut Prakan 10540	<a href="https://www.asb.ac.th">https://www.asb.ac.th</a>
The Arrivals Co., Ltd.	Bangkok	<a href="https://www.bantakhouse.com">https://www.bantakhouse.com</a>
The British International School, Phuket	Phuket 83000	<a href="https://www.bisphuket.ac.th">https://www.bisphuket.ac.th</a>
The Cabinet Interior Design Co., Ltd.	Bangkok 10260	<a href="https://www.thecabinet.co.th">https://www.thecabinet.co.th</a>
The Early Learning Centre	Bangkok 10110	<a href="https://www.elc-bangkok.com">https://www.elc-bangkok.com</a>
The Kitchen	Chonburi 20180	<a href="http://www.the-kitchen-bang-saray.com/">http://www.the-kitchen-bang-saray.com/</a>
The Residence Garden Co. Ltd	Pattaya 20260	<a href="https://www.theresidencegarden.com/">https://www.theresidencegarden.com/</a>
The Siam Oriental Trading Co., Ltd.	Chonburi 20150	<a href="https://www.siamoriental.net">https://www.siamoriental.net</a>
The St. Regis Bangkok	Bangkok 10330	<a href="https://www.stregis.com/bangkok">https://www.stregis.com/bangkok</a>
The Synergy Company Finland Ltd.		<a href="https://www.synergycom.eu">https://www.synergycom.eu</a>
Thonburi Wellbeing Co., Ltd.	Bangkok 10310	<a href="https://www.thg.co.th/en/">https://www.thg.co.th/en/</a>
THOME Ship Management (Thailand) Co., Ltd	Bangkok	<a href="https://www.thome.com.sg/contacts/country-contacts/country-thailand/">https://www.thome.com.sg/contacts/country-contacts/country-thailand/</a>
Thoresen Thai Agencies Public	Bangkok 10330	<a href="https://www.thoresen.com">https://www.thoresen.com</a>
Ticon Industrial Connection PCL	Bangkok 10120	<a href="https://www.ticon.co.th">https://www.ticon.co.th</a>
Tilleke & Gibbins International Ltd.	Bangkok 10120	<a href="https://www.tilleke.com">https://www.tilleke.com</a>
Timothy Jacob Jensen Studios	7840 HÅjslev	<a href="https://timothyjacobjensen.com">https://timothyjacobjensen.com</a>

TLI Scan Global Logistics Co.,Ltd.	Bangkok 10500	<a href="https://www.scangl.com">https://www.scangl.com</a>
TomSorensen	Bangkok 10260	<a href="https://www.tomsorensen.in.th">https://www.tomsorensen.in.th</a>
Total Access Communication PLC	Bangkok 10330	<a href="https://www.DTAC.co.th">https://www.DTAC.co.th</a>
Tour Lines Co., Ltd	Bangkok 10120	<a href="https://www.tourlines.co.th">https://www.tourlines.co.th</a>
TP Surin Beach Hotel Co., Ltd.	Phuket 83110	<a href="https://www.twinpalms-phuket.com/">https://www.twinpalms-phuket.com/</a>
Trafalgar International Ltd.,	Bangkok 10320	<a href="https://www.trafalgar-intl.com">https://www.trafalgar-intl.com</a>
Trail International School	Bangkok 10240	<a href="https://www.trailschool.ac.th">https://www.trailschool.ac.th</a>
Transpo International Ltd.	Bangkok 10110	<a href="https://www.transpologistics.com">https://www.transpologistics.com</a>
Tropical Bio Pallet Co.,Ltd.	PrachuapKhiriKhan	<a href="https://tropicalbiopallet.com">https://tropicalbiopallet.com</a>



Trusted Novus Bank	Gibraltar	<a href="https://trustednovusbank.gi">https://trustednovusbank.gi</a>
--------------------	-----------	---

Tuk Tours Co., Ltd.	PrachuapKhiriKhan 77110	<a href="https://www.tuktours.net">https://www.tuktours.net</a>
---------------------	-------------------------	---

## U

UD Trucks	Samut Prakan 10570	<a href="https://www.udtrucks.com/thailand">https://www.udtrucks.com/thailand</a>
United Flour Mill Public Co., Ltd.	Bangkok 10100	<a href="https://www.ufmfc.com/English/index.php">https://www.ufmfc.com/English/index.php</a>
United Relocations (Thailand) Co., Ltd.	Bangkok 10260	<a href="https://www.unitedreloth.net/">https://www.unitedreloth.net/</a>
University of Boras Sweden		<a href="https://www.hb.se">https://www.hb.se</a>
URL Co., Ltd.		<a href="https://www.url-group.com">https://www.url-group.com</a>

## V

Vacon South East Asia	Bangkok 10250	<a href="https://www.vacon.com">https://www.vacon.com</a>
Valmet Co., Ltd.	Chonburi 20230	<a href="https://www.valmet.com">https://www.valmet.com</a>
Varee Chiangmai International School	Chiang Mai 50000	<a href="https://www.varee.ac.th">https://www.varee.ac.th</a>
Vartika Adventure Retreatic Resort	PrachuapKhiriKhan 77210	<a href="https://www.vartikaadventure.com">https://www.vartikaadventure.com</a>
Vartika Resovilla KuiBuri	PrachuapKhiriKhan 77210	<a href="https://www.vartikakuiburi.com">https://www.vartikakuiburi.com</a>
Ventpro Solutions Co., Ltd.	Prachuapkirikhan 77110	<a href="https://www.ventpro.co.th">https://www.ventpro.co.th</a>
Vestas Wind Technology Thailand Co., Ltd.	Bangkok 10110	<a href="https://www.vestas.com">https://www.vestas.com</a>
Vestergaard Company Ltd.	Chonburi 20230	<a href="https://www.g-vestergaard.com">https://www.g-vestergaard.com</a>
Vianova Systems AS	Bangkok 10320	<a href="https://www.novapoint.com">https://www.novapoint.com</a>
Vickery & Worachai Ltd.	Bangkok 10330	<a href="https://www.v-w.co.th">https://www.v-w.co.th</a>

Viking Life-saving Equipment (Thailand)	Chonburi 20230	<a href="https://www.viking-life.com">https://www.viking-life.com</a>
Vision House Limited	Bangkok 10110	<a href="https://www.visionhouse.co.th">https://www.visionhouse.co.th</a>
Volvo Car (Thailand) Ltd.	Bangkok 10250	<a href="https://www.volvocars.com/th">https://www.volvocars.com/th</a>
Volvo Group (Thailand) Co.,Ltd	Samutprakarn 10540	<a href="https://www.volvo.com/group/thailand/th-th">https://www.volvo.com/group/thailand/th-th</a>
Volvo Truck & Bus (Thailand) Co., Ltd.	Samut Prakan 10540	<a href="https://www.volvotrucks.volvo.co.th">https://www.volvotrucks.volvo.co.th</a>
"Food & Bio Cluster Denmark c/o VSI-Group"	Chiang Mai 50300	<a href="https://foodbiocluster.dk/kontakt">https://foodbiocluster.dk/kontakt</a>

## W

Waever Group	Bangkok 10310	<a href="https://www.waevergroup.com">https://www.waevergroup.com</a>
Wallenius Media Co., Ltd.	Pathum Thani 12120	<a href="https://thailandsposten.com/start/">https://thailandsposten.com/start/</a>
Wallenius Wilhelmsen Lines Thailand	Bangkok 10120	<a href="https://www.2wglobal.com">https://www.2wglobal.com</a>
Wartsila Singapore Pte Ltd.	Bangkok 10110	<a href="https://www.wartsila.com">https://www.wartsila.com</a>
WAS Trading Co., Ltd.	Bangkok 10310	
Wearnes Automotive	Bangkok	<a href="https://www.wearnesauto.com/th/">https://www.wearnesauto.com/th/</a>
WearYouWant Ltd.	Bangkok	<a href="https://www.wearyouwant.com">https://www.wearyouwant.com</a>
WebOn (Thailand) Limited	Bangkok 10110	<a href="https://www.webon-thailand.com">https://www.webon-thailand.com</a>
WHA Industrial Development	Samutprakarn 10270	<a href="https://www.wha-group.com/en/">https://www.wha-group.com/en/</a>
Wiik & Hoeglund Public., Ltd.	Bangkok 10400	<a href="https://www.wiik-hoeglund.com">https://www.wiik-hoeglund.com</a>
Wilhelmsen Ships Service	Bangkok 10120	<a href="https://www.wilhelmsen.com">https://www.wilhelmsen.com</a>
Wilson Logistics (Thailand) Ltd.	Bangkok 10320	<a href="https://www.wilson-logistics.com">https://www.wilson-logistics.com</a>
Wissen & Co Ltd.	Bangkok 10110	<a href="https://www.wissenandco.com">https://www.wissenandco.com</a>

## Y

Yara (Thailand) Ltd.	Bangkok 10110	<a href="https://www.yara.com">https://www.yara.com</a>
Yozzo Co., Ltd.	Bangkok 10900	<a href="https://www.yozzo.com">https://www.yozzo.com</a>



A smiling man with dark hair is in a tropical pool, with a woman's shoulder visible next to him. The background shows palm trees and a blue sky.

**Thailand Expat Guide by ScandAsia**  
Nordic Business Directory 2022

ISSN 2287-0350

**Publisher:**

Scandinavian Publishing Co., Ltd.  
211 Soi Prasert Manukitch 29  
Prasert Manukitch Road, Bangkok 10230  
Tel.: +66 2 943 7166-8  
Fax: +66 2 943 7169  
Website: [www.scandasia.com](http://www.scandasia.com)

**Editorial content by:**

Editor in Chief Mr. Gregers Moller  
Edition closed June 2022

**Design by:**

Mrs Disraporn Yatprom  
Scandinavian Publishing Co., Ltd.

**Advertising:**

Marketing Director Mr. Finn Balslev  
Scandinavian Publishing Co., Ltd.  
211 Soi Prasert Manukitch 29  
Prasert Manukitch Road,  
Bangkok 10230  
Mob.: +66 81 866 2577  
Tel.: +66 2943 7166-8  
[finn@scandmedia.com](mailto:finn@scandmedia.com)  
Website: [www.scandasia.com](http://www.scandasia.com)

**Printing:**

Inthanon Interprint Company Limited



isb.ac.th



# uniquelyISB

#1. ISB students love to learn. ISB provides a challenging and transferrable international curriculum based primarily on US, AP and IB frameworks for a multicultural and multilingual student body. Uniquely independent, our curriculum is informed by leading educational research and global best practice. #uniquelyISB



**#uniquelyISB**

**Thailand's Premier International School since 1951  
welcoming applications for 2022**